

Organizing and Managing a Statewide PSM Initiative



PATRICIA BISHOP
UNIVERSITY OF CENTRAL FLORIDA



Vision



- Create PSM programs that will contribute to workforce and economic development in 5 key industry sectors, identified by our workforce and economic development agencies as crucial to Florida:
 - Biotechnology
 - Environmental sciences/sustainability/energy
 - Healthcare
 - Simulation
 - Homeland Security/Forensics
- Create programs that would contribute to the regional needs



The following universities
are participating:

Florida A&M

Florida Atlantic

Florida Gulf Coast

Florida International

Florida State

U of Central Florida

U of Florida

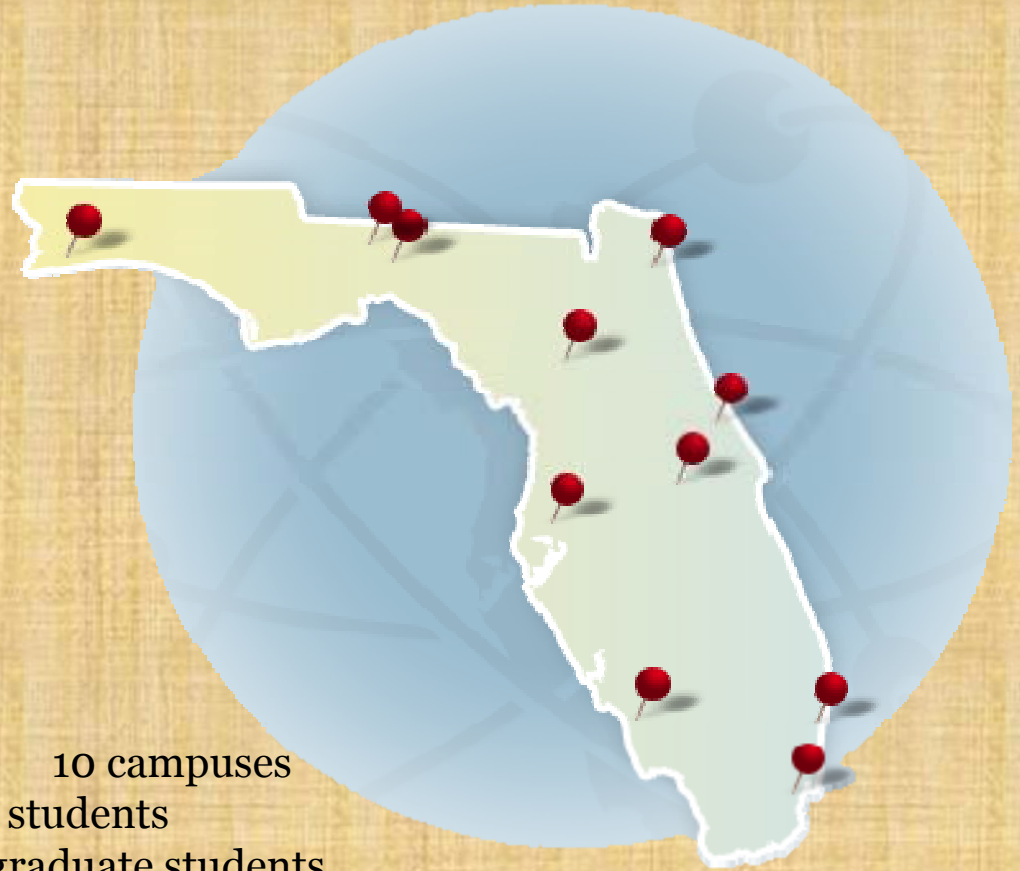
U of North Florida

U of South Florida

U of West Florida

Embry-Riddle Aeronautical
University

PSMs in Florida



10 campuses

302,513 students

56,872 graduate students

44,428 master's students

70,659 degrees awarded, 14,614
master's degrees awarded

Getting Organized



- Graduate Deans are the governing board for the initiative –decisions made collegially.
- Universities were welcome to participate as much or as little as they chose.
- Explored the vision with partners
- Submitted a modest Sloan proposal – funded
- Submitted NSF proposal

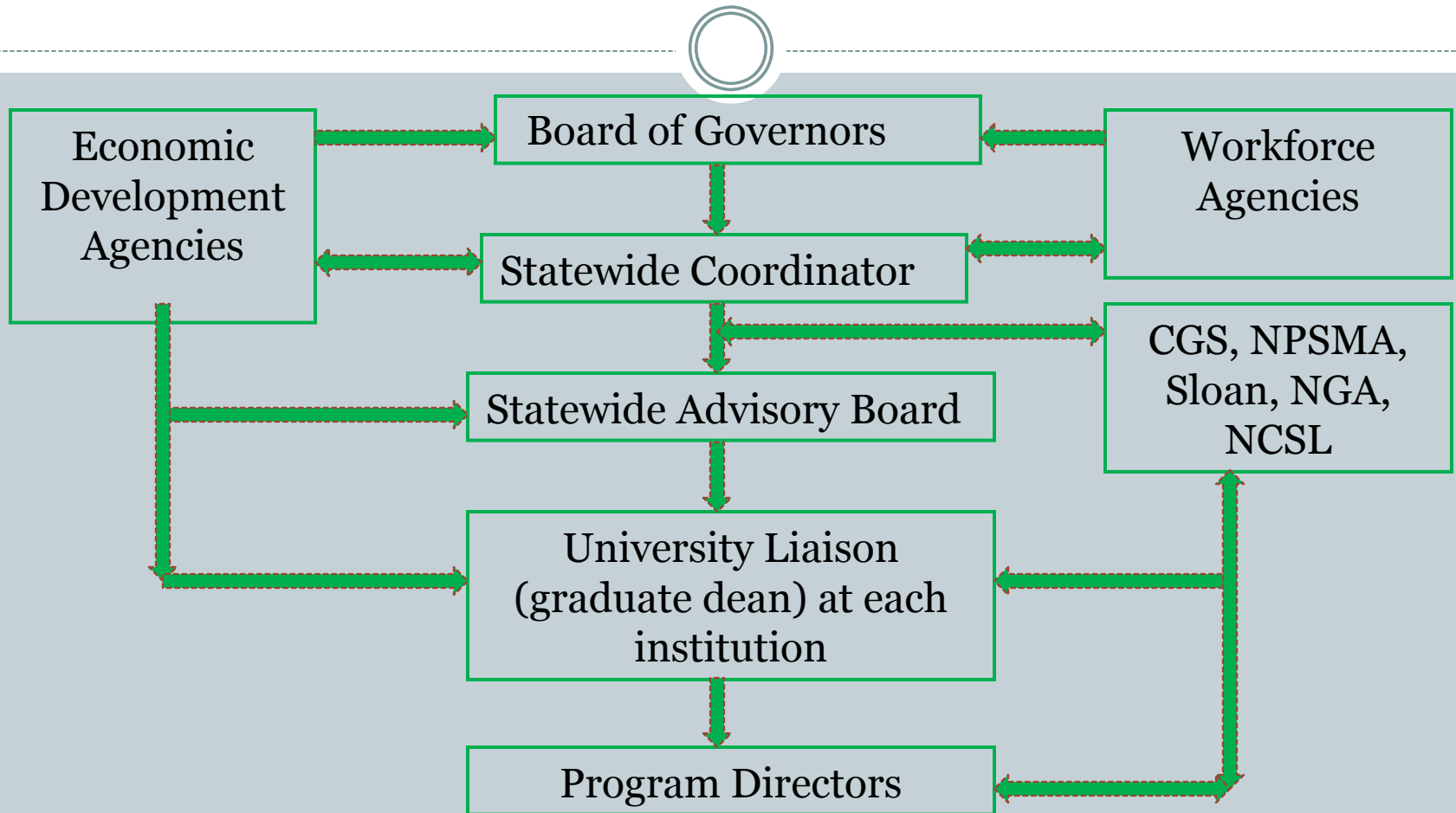
Getting Organized



Agreed:

- To share courses with each other, particularly professional and online
- Timeline for delivering the programs
- All programs would satisfy CGS requirements for PSM programs and would apply to be certified

Organizational Chart



Organization of those involved



Key groups that require constant communications

- Workforce agencies (both state and local), Chamber of Commerce (both state and local), economic development agencies, employer groups (disciplinary and more general), BOG, lobbyists— full-time job
- Graduate deans and program directors. Right now graduate deans at their universities serve as conduit for information to/from faculty
- Immediate need to develop communication materials (website, brochures, posters)
- Level of interaction is still fairly informal, hasn't addressed specific issues of how to share courses, etc.

Employer Brochure




PROFESSIONAL SCIENCE MASTER'S INITIATIVE
STATE of FLORIDA

Employer's Brochure

www.FLPSM.org

What is a PSM?

Equivalent to the MBA for the private sector, the PSM is a two-year degree program, and designed to integrate professional science, mathematics, and law to better prepare graduates for professional positions in the private sector.

Elements of PSM

This two-year degree includes four key elements:

1. Industry advisory board;
2. In-depth study in a science or technology-driven field;
3. Industry internship; and
4. Professional development courses intended to emphasize written and oral communication, leadership, business, and team-building skills.

How many programs are there?

The statewide initiative PSM degree program will encompass PSM programs that target industry sectors specific to each region, with focus important to each of the following:

Pharmaceutical

Pharmaceutical programs include Biotechnology, Pharmaceutical Chemistry, and Health Informatics, and that are planned for this sector.

Environmental / Sustainability

Environmental programs include Environmental Science, Environmental Engineering, and GIS, and Environmental Management.

Homeland Security

Homeland Security programs include Cyber and Information Security, Digital Forensics, and Intelligence.

Healthcare

Planned PSM programs include Health Informatics, Medical Informatics, and Healthcare Informatics and Cyto genetics/Genetic Counseling.

Simulation / Aviation

Planned PSM programs for this sector include the Joint Modeling and Simulation PSM program between Embry-Riddle Aeronautical University and the University of Central Florida.

Why choose me?

Proven problem solvers.

The PSM capstone experience is a team-oriented, multidisciplinary research project addressing challenges and opportunities in the real world. The PSM graduates' capstone and internship experiences prepare them to hit the ground running for their company.

Quick Facts

- There are over 130 PSM programs at over 70 institutions in 25 states and the District of Columbia.
- In the last two years alone, the number of PSM programs grew 20 percent; the first program was started about a decade ago.
- In academic year 2007-2008 there were over 2,800 students enrolled in PSM programs.
- The American Recovery and Reinvestment Act of 2009 includes \$15 million for the development of PSM programs through the National Science Foundation.

How to contact?

Visit our website for more information www.flpsm.org

Program Director

Dr. Donald Duke
dduke@fgcu.edu
Dean, College of Business
Florida Gulf Coast University

Program Director

Dr. Larry Dennis
larry.dennis@col.ufl.edu
Health Informatics
Florida State University (FSU)

Program Director

Dr. Gray Otkien
otkien@math.fsu.edu
Financial Math
Florida State University (FSU)

Program Director

Dr. Janet Peterson
jpeter@lsu.edu
Scientific Computing
Louisiana State University

Program Director

Dr. Peter Kincald
pkincald@st.ucf.edu
Simulation (with ERAU)
University of Central Florida (UCF)

Program Director

Dr. Sheau Lang
slang@mail.ucf.edu
Digital Forensics
University of Central Florida (UCF)

Program Director

Dr. Henry Daniell
daniell@mail.ucf.edu
Biotechnology
University of Central Florida (UCF)

Program Director

Dr. Jay Kapat
jkapat@mail.ucf.edu
Energy Systems
University of Central Florida (UCF)

Program Director

Dr. Aaron Liberman
alberman@mail.ucf.edu
Healthcare Informatics
University of Central Florida (UCF)

Program Director

Dr. Ian Tebbett
itebbett@unf.edu
Forensic Science, Pharmaceutical Chemistry
University of North Florida (UNF)

Program Director

Dr. Radha Pyati
radha.pyati@unf.edu
Environmental Studies
University of North Florida (UNF)

Program Director

Dr. Richard O. Snyder
rsnyder@unf.edu
Biotechnology
University of North Florida (UNF)

Program Director

Dr. Paul Zwick
pzwick@unf.edu
GIS for the Built Environment
University of North Florida (UNF)



Dr. Richard O. Snyder
rsnyder@unf.edu
(386) 418-1642
Biotechnology

Dr. Paul Zwick
pzwick@unf.edu
(352) 392-4838
GIS for the Built Environment

University of South Florida (USF)

Dr. Inge Wefee
iwefee@health.usf.edu
(813) 974-5300
Biotechnology, Bioinformatics and Computational Biology, Healthcare Informatics and Cyto genetics/Genetic Counseling

University of South Florida (USF)

Dr. Melanie Fiedinger-Whitmore
mfiedin@stpt.usf.edu
(727) 873-4971
Environmental Science

University of West Florida (UWF)

Dr. George Stewart
gstewart@uwf.edu
(850) 473-7226
Public Health/Health Care Communities, Biomedical/Pharmaceutical Sciences, Medical Informatics

University of West Florida (UWF)

Dr. Klaus Meyer-Arendt
kma@uwf.edu
(850) 479-3281
Environmental Sustainability and GIS

University of North Florida (UNF)

Dr. Radha Pyati
radha.pyati@unf.edu
(904) 620-1918
Environmental Studies

University of North Florida (UNF)

Dr. Richard O. Snyder
rsnyder@unf.edu
(386) 418-1642
Biotechnology

University of North Florida (UNF)

Dr. Paul Zwick
pzwick@unf.edu
(352) 392-4838
GIS for the Built Environment

University of North Florida (UNF)



Management of Statewide Initiative

Sloan deliverables:

1. Employer Survey
2. Student Survey
3. Proposals submitted
4. Programs have had to meet with employers and develop curricula and advisory boards
5. Implemented website at www.flpsm.org.
6. Implemented employer brochure

- In absence of statewide coordinator, UCF has served as central site for website, brochure development, IRB approvals, proposal development, listserve maintainer, etc.
- UCF solicits input from other universities on all key steps as we move forward and asks for volunteers as need arises

Management of Modest Resources



Budget includes money for expenses, graduate assistant at \$15K, and travel

- Interim statewide coordinator – night job; UCF pays for graduate dean's time
- Graduate assistant to coordinate and communicate – pay for 20 hrs/wk
- UCF pays for design work, computers, space for graduate assistant
- Expense and travel monies for universities either subcontracted to them or they were free to simply send UCF receipts of their expenses, up to amount

Still to do



- Develop mechanisms to register students in the shared courses
- Develop listservs for the program directors and campus liaisons to communicate
- Plan statewide events for students, employers, and faculty focused on best practices and career and professional development
- Formulate assessment tool at state level for PSM programs (# grads, job placement, employer satisfaction)
- Complete the appointment of the statewide advisory board
- Ensure programs are implemented per the timeline

Difficulties



- Gaps in state strategic planning – education, workforce and economic development agencies
- Board of Governor's structure is underdeveloped and underfunded
- Gaining access to employer groups, workforce groups

Opportunities



- Florida is developing an integrated strategic plan, linking education, workforce and economic development – and looking for funding to fuel this
- Initiative raises visibility of graduate education as part of the solution to Florida's challenges
- Level of cooperation required has increased communications, opportunities for programs, faculties and universities to work together – we can become more than the sum of our parts