



# Highlights from the 2014 CGS/GRE Survey of Graduate Enrollment & Degrees

Jeff Allum, EdD  
and  
Hironao Okahana, MPP, PhD  
(@HironaoOkahana)

Council of Graduate Schools  
(@CGSGradEd)

A presentation for the Summer 2015 CGS Research and Policy Forum, August 27, 2015

# CGS/GRE Survey of Graduate Enrollment & Degrees

- Jointly sponsored by CGS and the Graduate Record Examinations (GRE) Board
- Conducted annually since 1986
- Designed to provide information about applications for admission to graduate school, graduate student enrollment, and graduate degrees and certificates conferred
- The only national survey that collects data on first-time and total graduate enrollment across all fields of graduate study
- The only source of data on graduate enrollment by degree level and on applications to graduate school by broad field of study

# About the 2014 Survey

- The 2014 survey was launched in November 2014 to U.S.-based institutions that were members of:
  - Council of Graduate Schools, and/or
  - One of the four regional graduate school associations:
    - Conference of Southern Graduate Schools (CSGS)
    - Midwestern Association of Graduate Schools (MAGS)
    - Northeastern Association of Graduate Schools (NAGS)
    - Western Association of Graduate Schools (WAGS)
- Survey was sent to 787 colleges and universities. Useable responses were received from 636 institutions, for an overall response rate of 81%

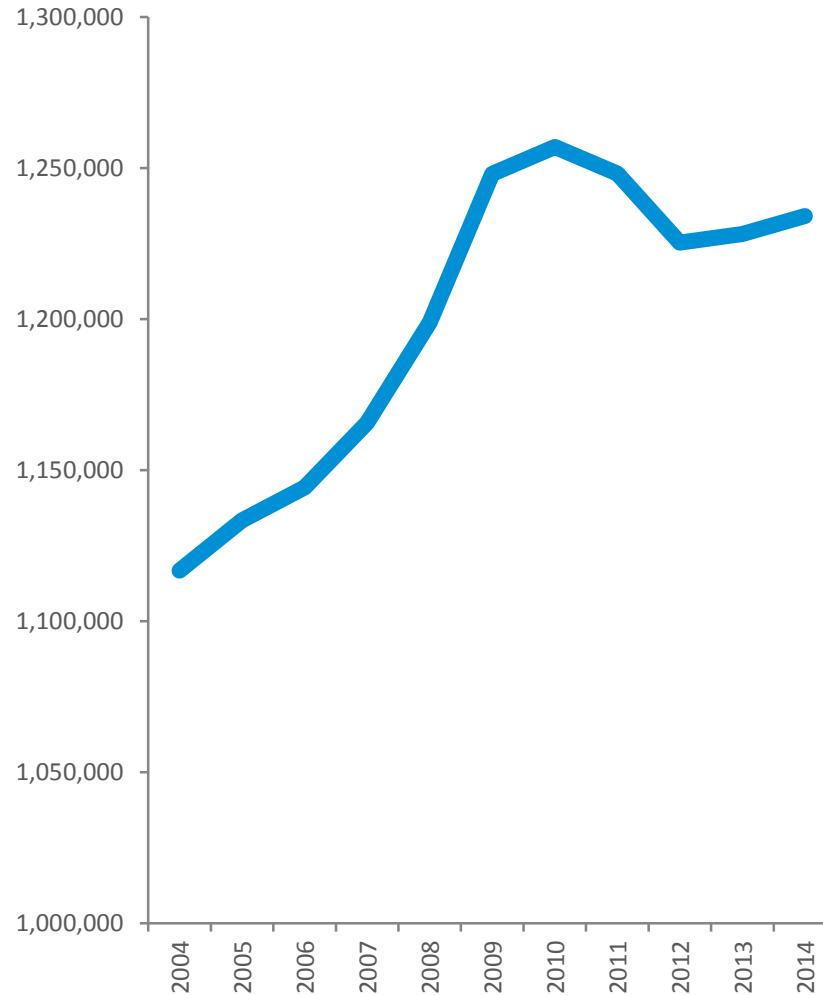
# Today's Presentation

- Highlights from the forthcoming report ...
  - New records
  - Notable trends
  - Insights into specific populations
- Open discussion

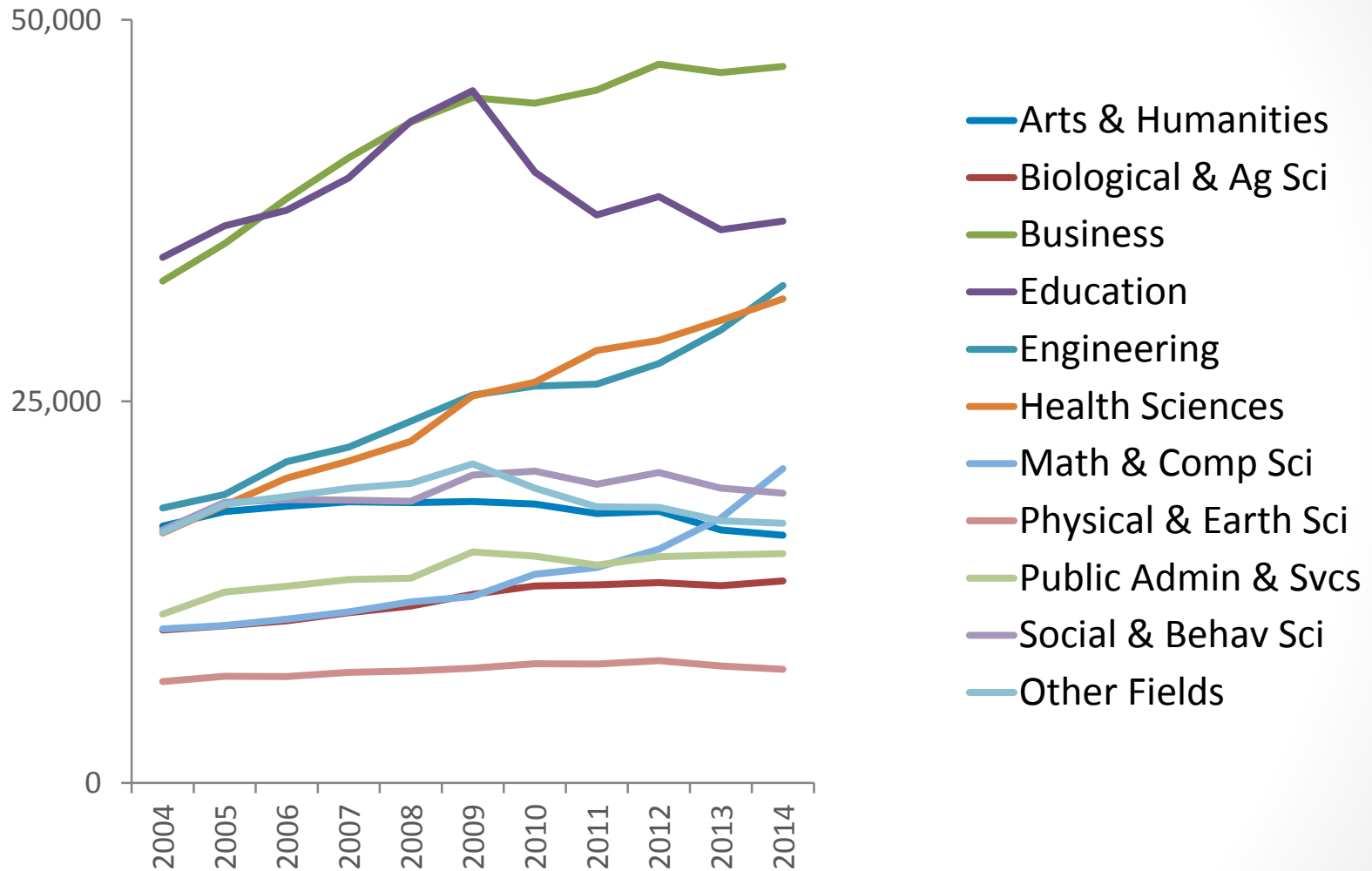
# New Records

- For the first time in the survey's history, the total number of graduate applications surpassed two million
- The number of offers of admission was 851,057
- The Fall 2014 first-time graduate enrollment was 479,642

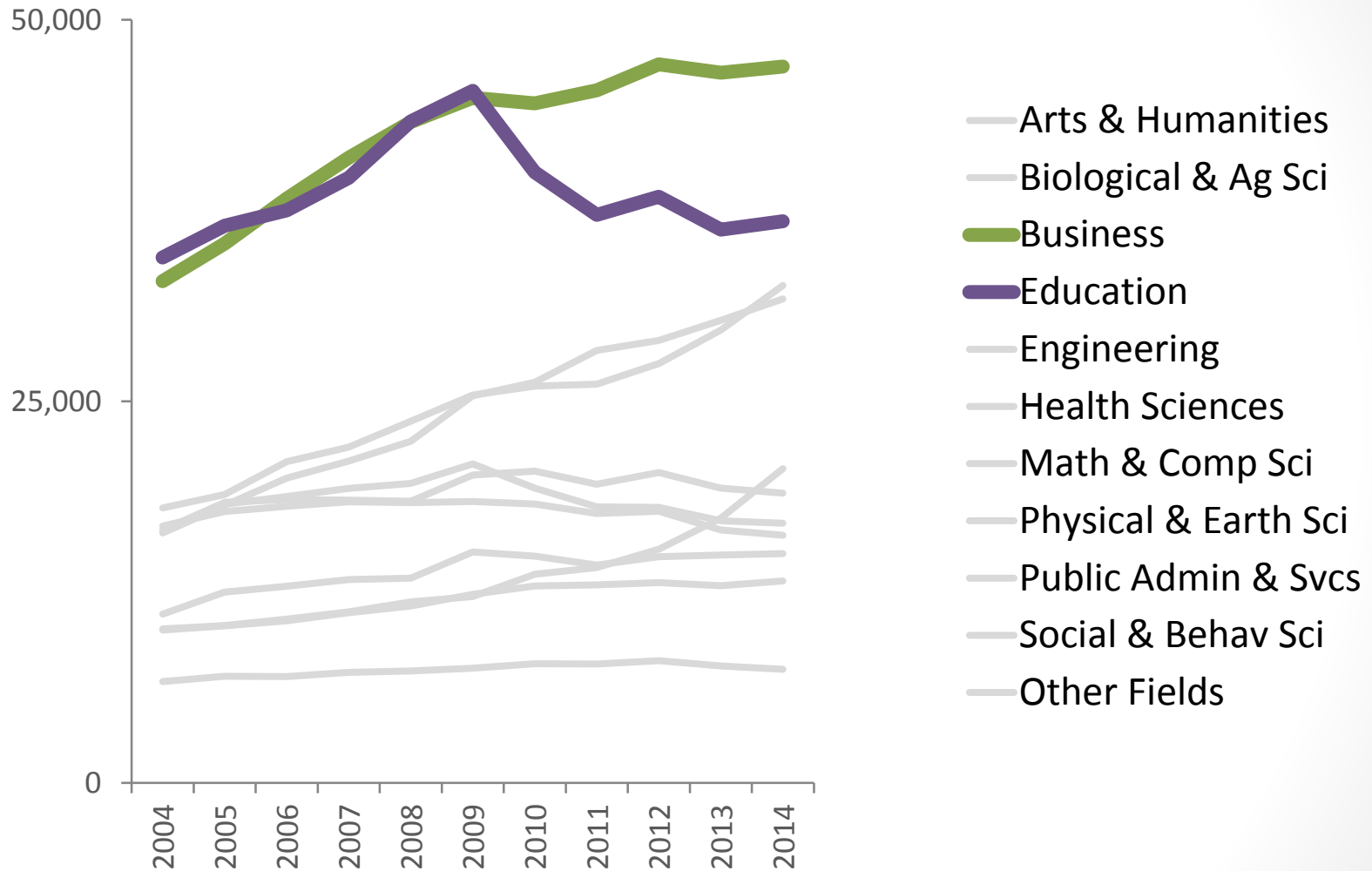
# Total graduate enrollment peak was in 2010



# First-Time Graduate Enrollment by Broad Fields of Study, Fall 2004 to Fall 2014

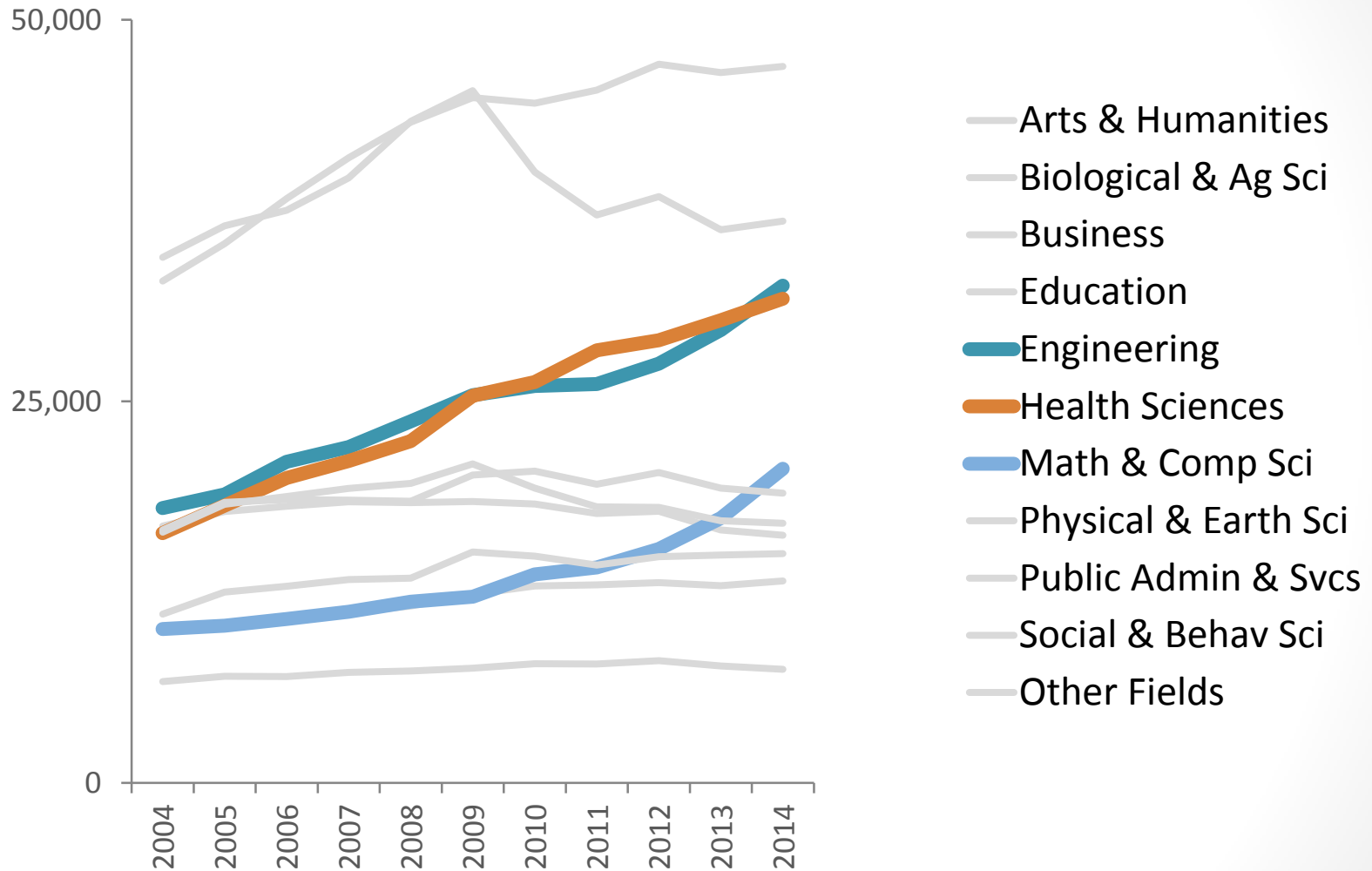


# First-Time Graduate Enrollment by Broad Fields of Study, Fall 2004 to Fall 2014

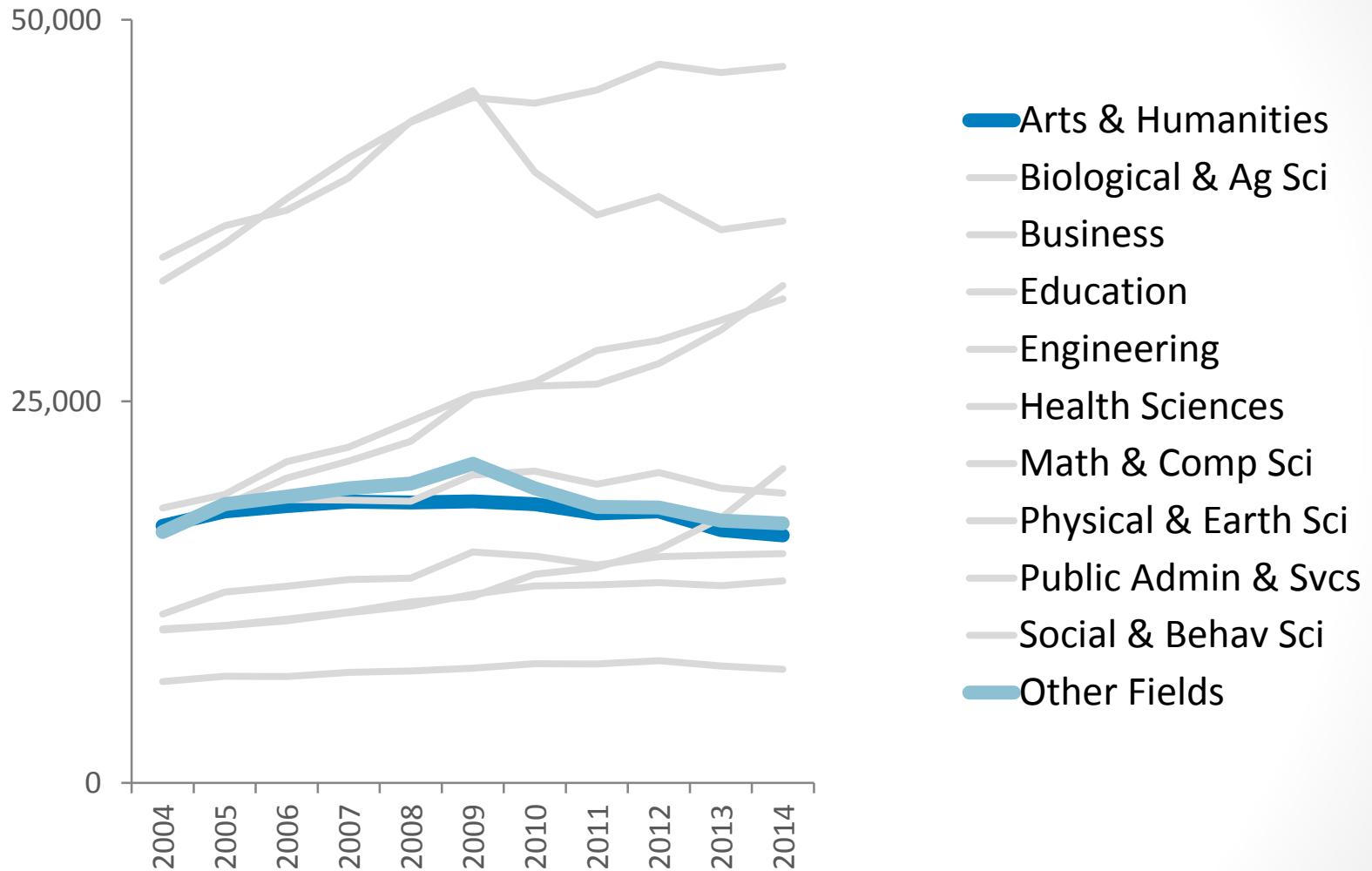




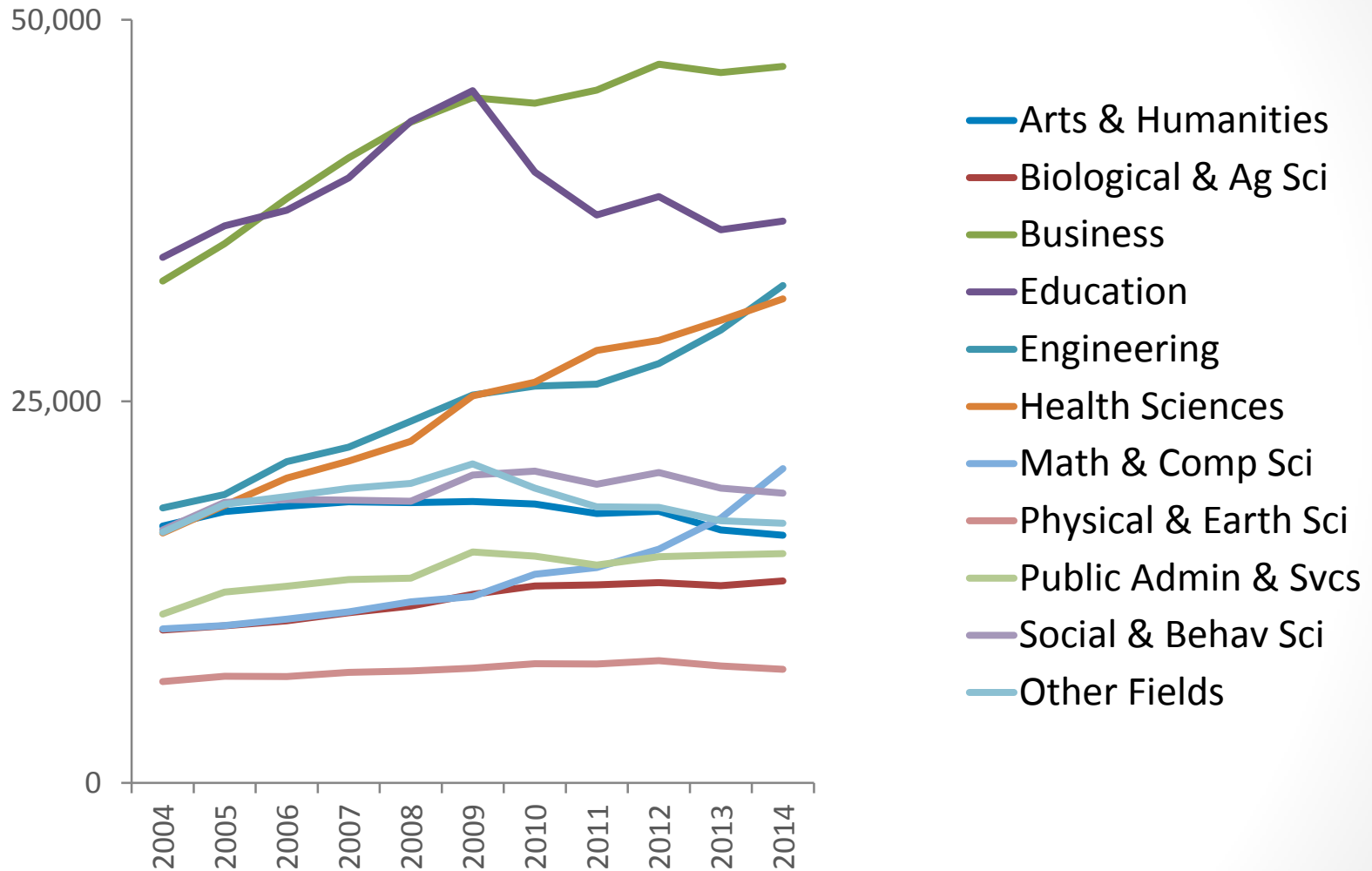
# First-Time Graduate Enrollment by Broad Fields of Study, Fall 2004 to Fall 2014



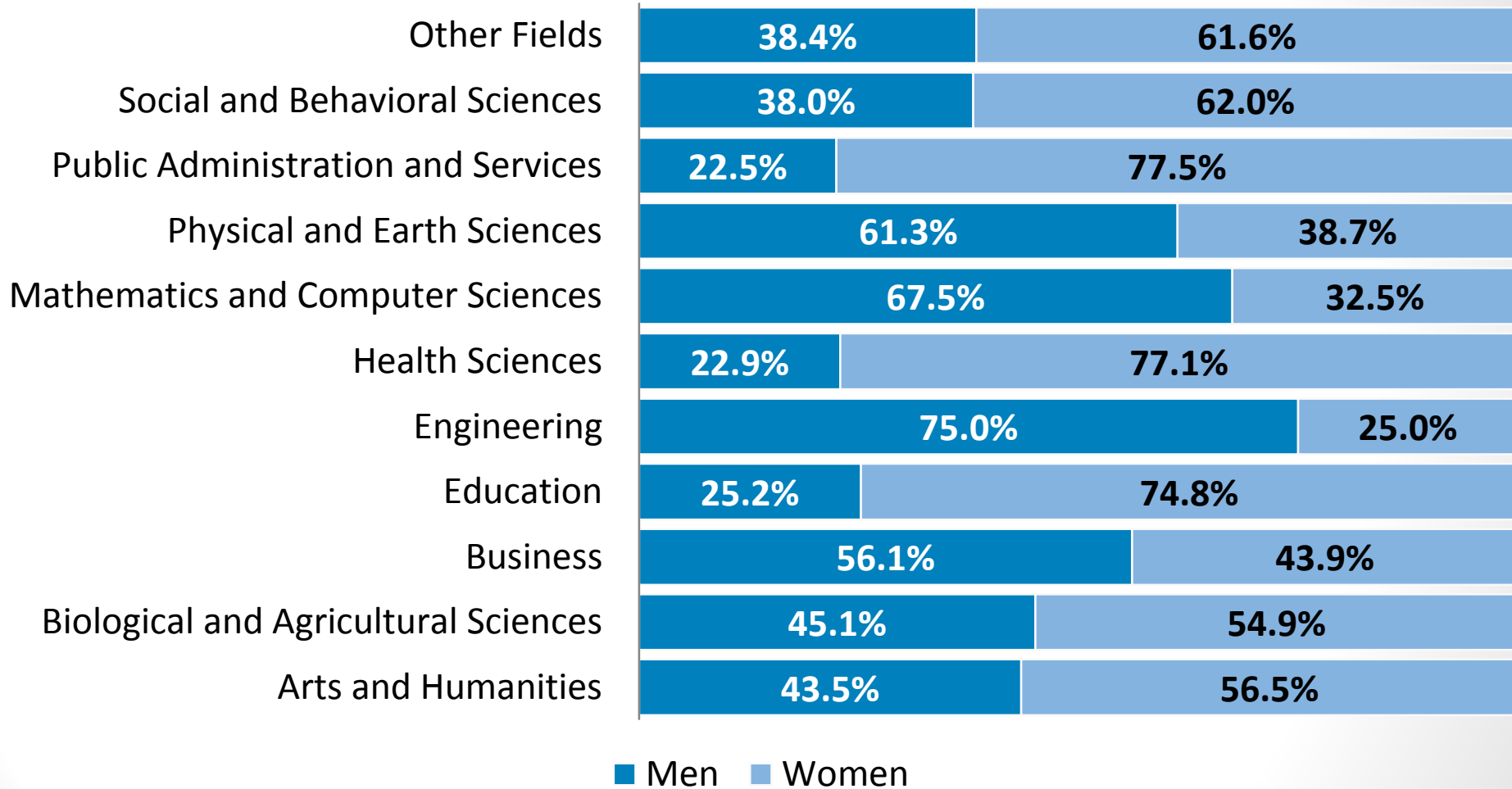
# First-Time Graduate Enrollment by Broad Fields of Study, Fall 2004 to Fall 2014



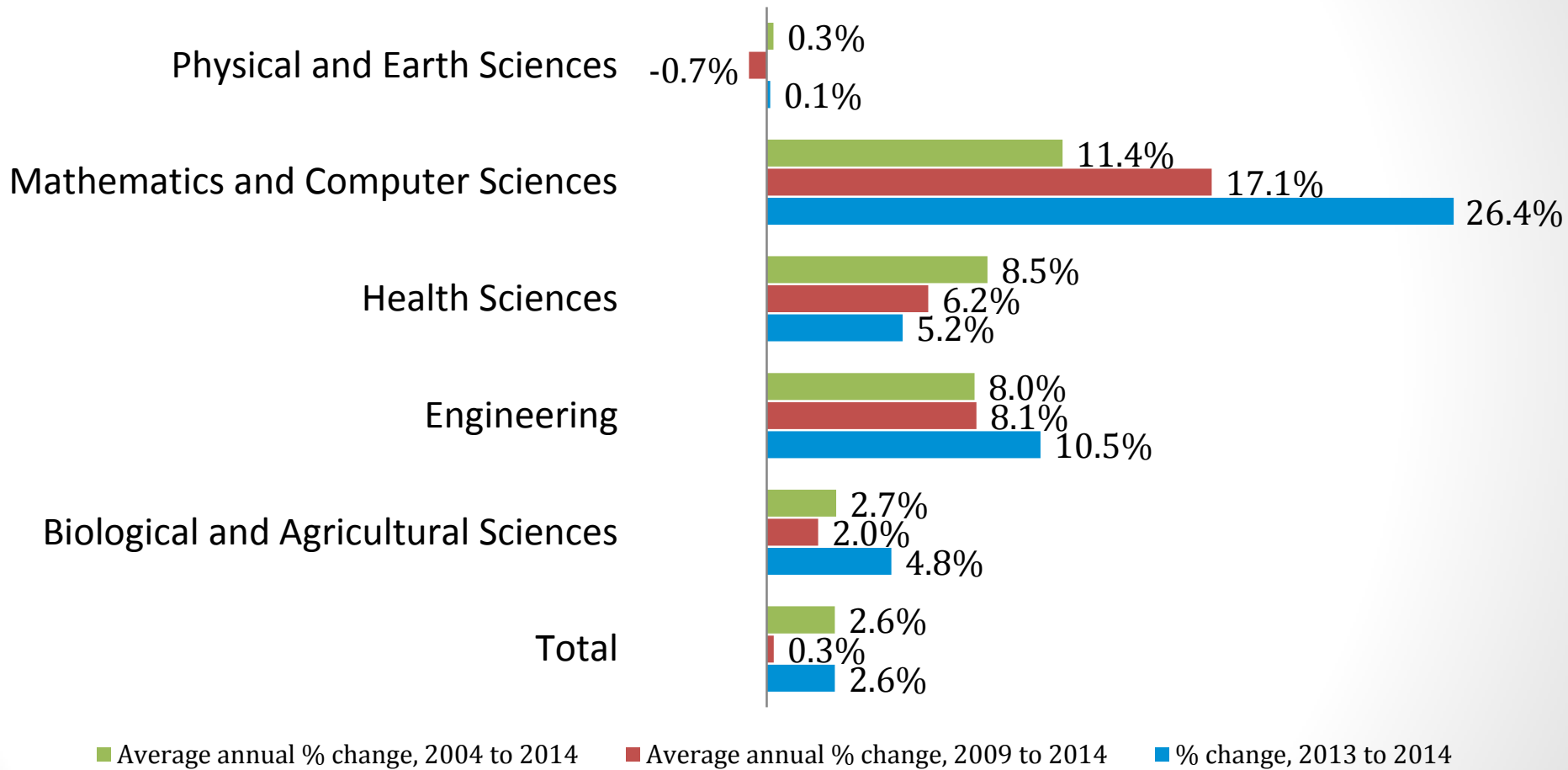
# First-Time Graduate Enrollment by Broad Fields of Study, Fall 2004 to Fall 2014



# More women than men enrolled for the first-time in graduate programs in Fall 2014, but ...

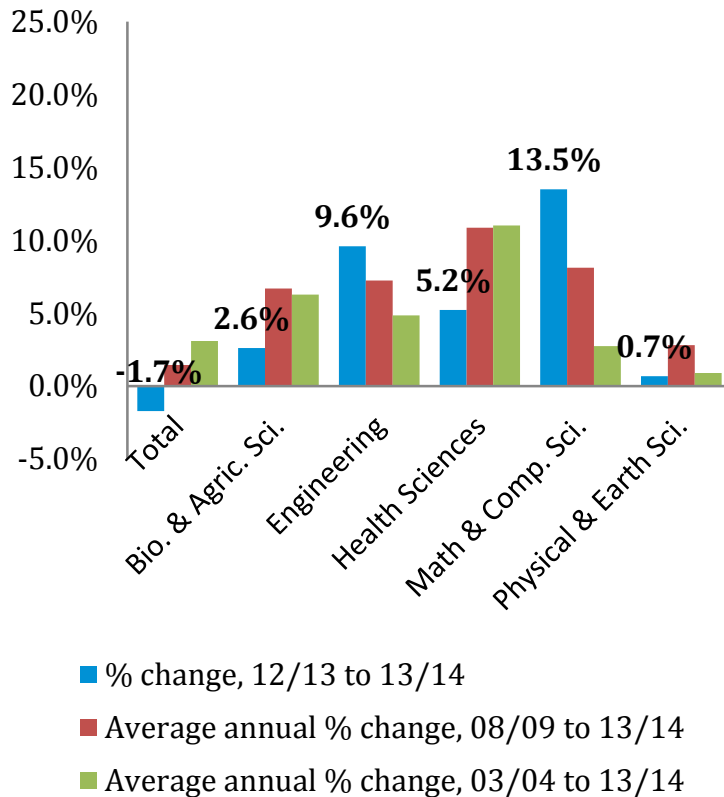


# First-time graduate enrollment in S&E fields for women is on the rise



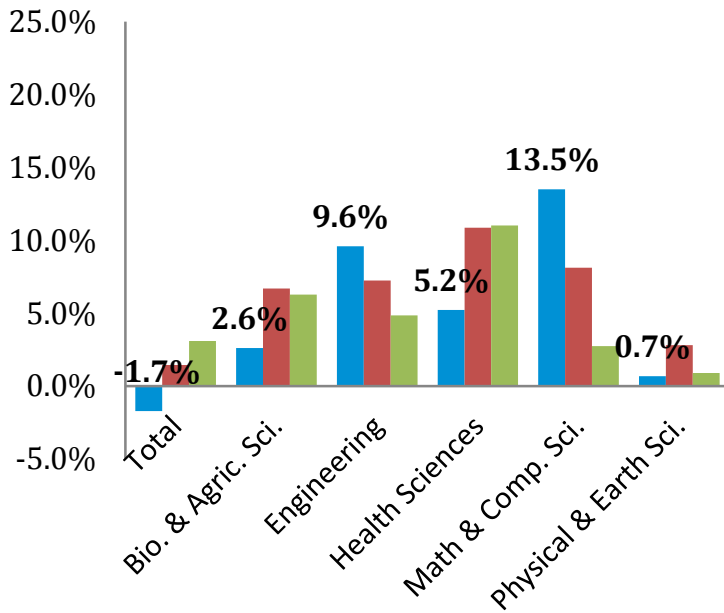
# Women also recorded substantial gains in S&E degree attainment

Trends in S&E master's degrees awarded to women, 03/04 to 13/14



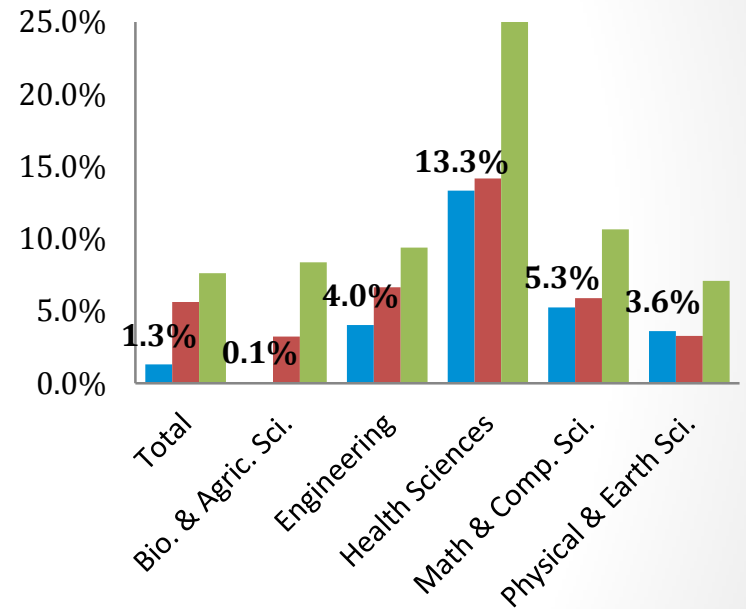
# Women also recorded substantial gains in S&E degree attainment

## Trends in S&E master's degrees awarded to women, 03/04 to 13/14



■ % change, 12/13 to 13/14  
 ■ Average annual % change, 08/09 to 13/14  
 ■ Average annual % change, 03/04 to 13/14

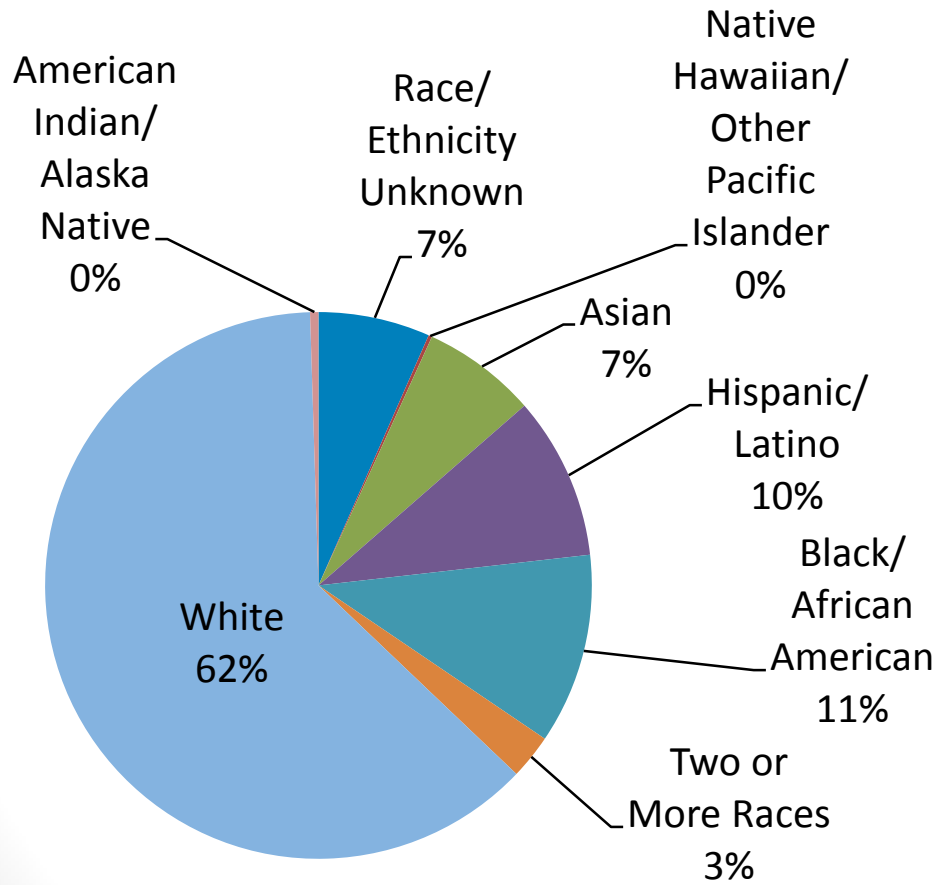
## Trends in S&E doctorates awarded to women, 03/04 to 13/14



■ % change, 12/13 to 13/14  
 ■ Average annual % change, 08/09 to 13/14  
 ■ Average annual % change, 03/04 to 13/14

# Underrepresentation of certain populations

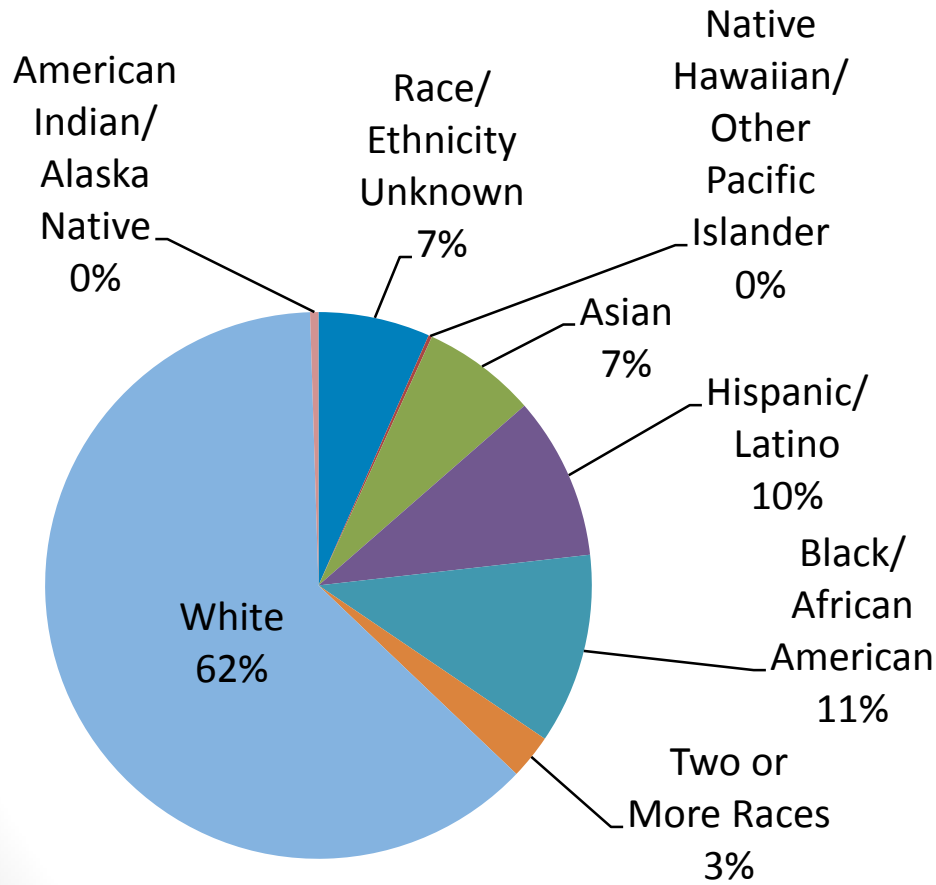
## U.S. Citizen and Permanent Resident First-Time Graduate Enrollment by Race/Ethnicity, Fall 2014





# Underrepresentation of certain populations

## U.S. Citizen and Permanent Resident First-Time Graduate Enrollment by Race/Ethnicity, Fall 2014



## U.S. population distribution by race/ethnicity

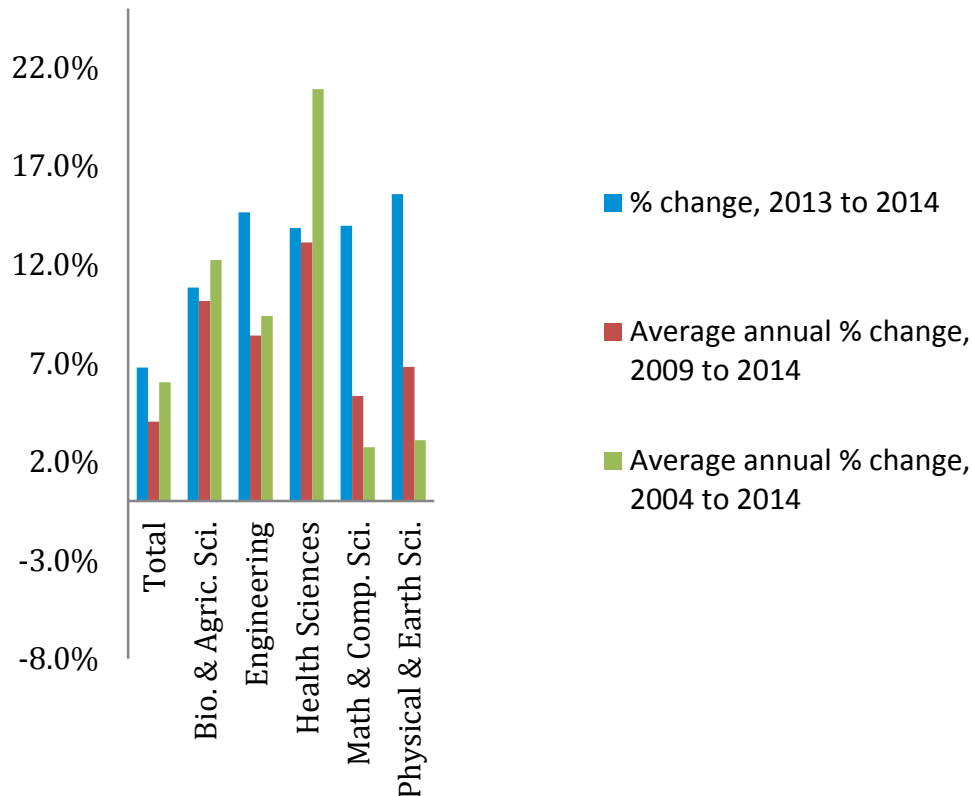
65%	White
16%	Hispanic/Latino
13%	Black/African American
5%	Asian

# The growth in domestic first-time graduate enrollment is attributed to non-White students

	% change, 2013 to 2014	Average annual % change, 2009 to 2014	Average annual % change, 2004 to 2014
U.S. Citizens/Permanent Residents	1.3%	-0.4%	1.9%
White	0.2%	-1.2%	1.0%
Asian/Pacific Islander	3.4%	1.3%	3.5%
American Indian/Alaska Native	-3.0%	-5.5%	-0.6%
Black/African American	2.0%	0.4%	5.2%
Hispanic/Latino	6.8%	4.0%	6.0%

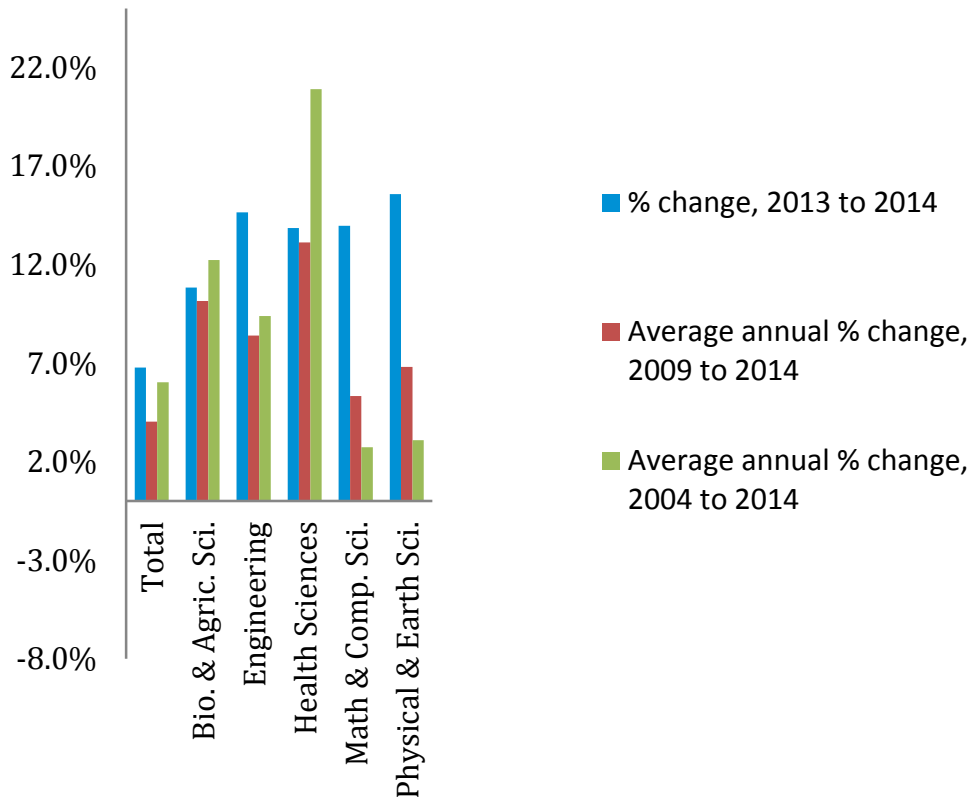
# Growth in first-time graduate enrollment of Hispanic/Latino students in S&E fields is strong

**% change in S&E first-time graduate enrollment for Hispanic/Latino students, 2004 to 2014**

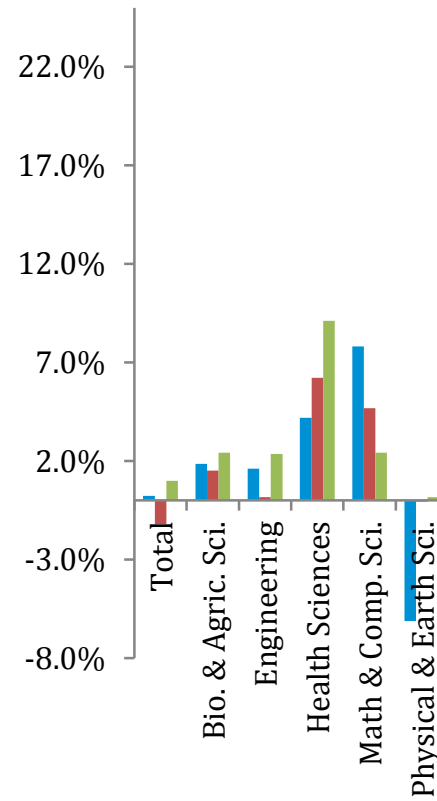


# Growth in first-time graduate enrollment of Hispanic/Latino students in S&E fields is strong

**% change in S&E first-time graduate enrollment for Hispanic/Latino students, 2004 to 2014**



**% change in S&E first-time graduate enrollment for White students, 2004 to 2014**



# International enrollment is driving the growth

## % changes in first-time graduate enrollment by citizenship, 2004 to 2014

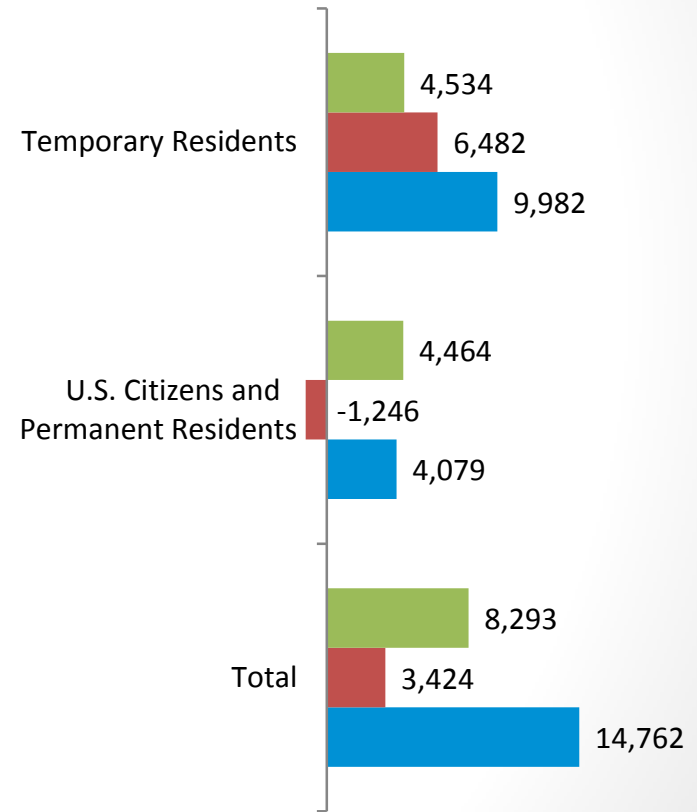


# International enrollment is driving the growth

## % changes in first-time graduate enrollment by citizenship, 2004 to 2014



## Change in first-time graduate enrollment headcounts by citizenship, 2004 to 2014

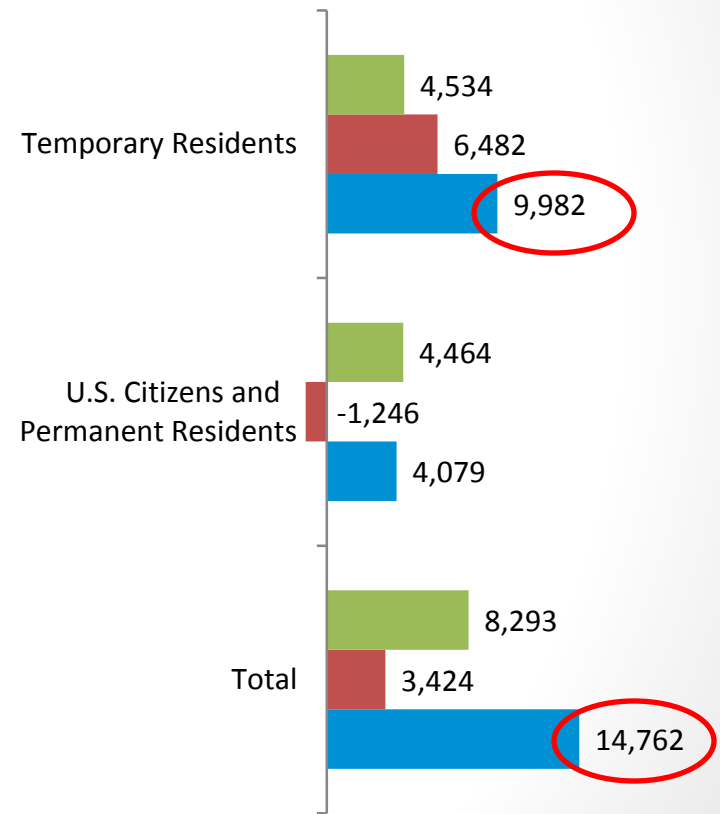


# International enrollment is driving the growth

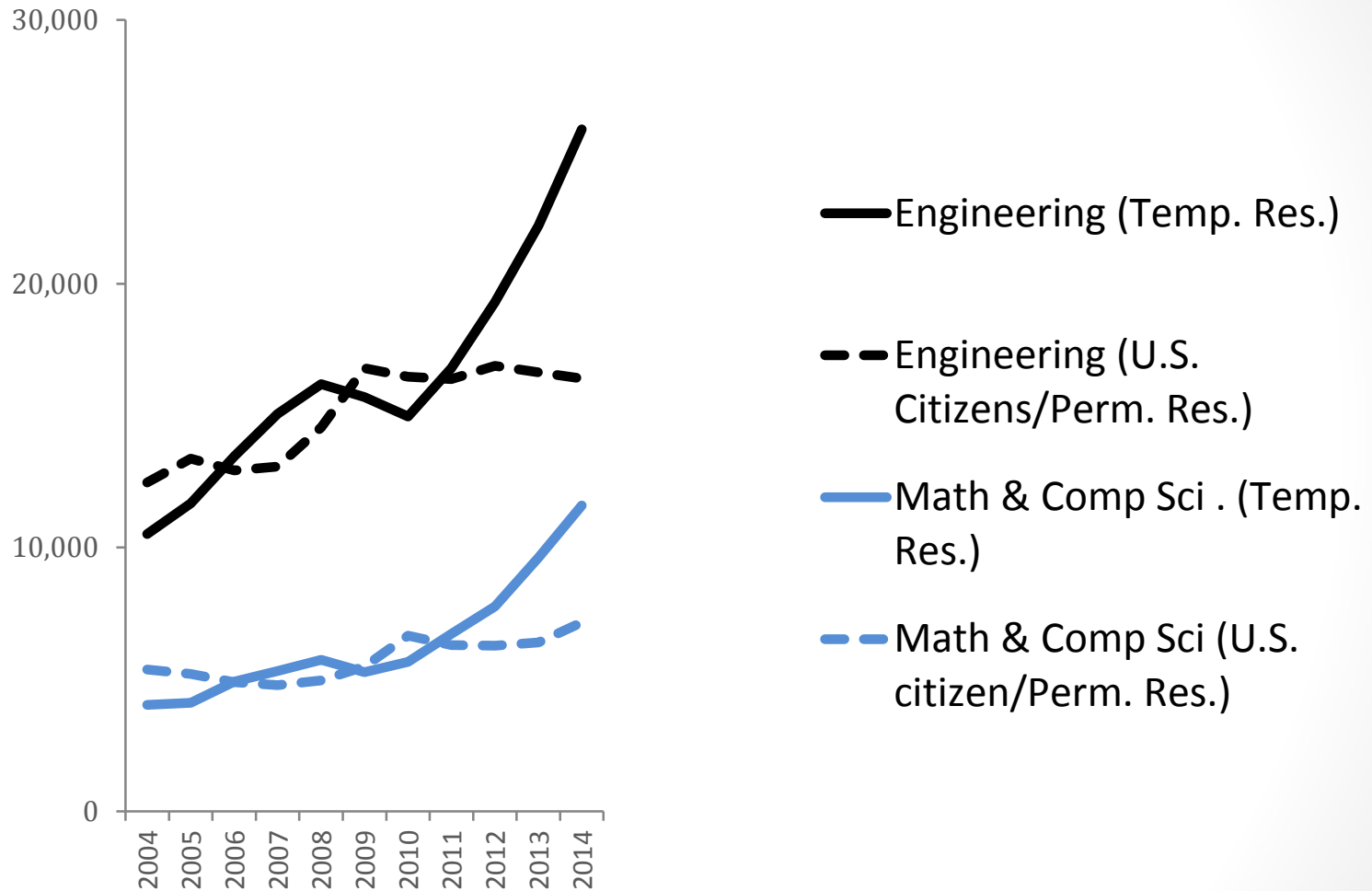
## % changes in first-time graduate enrollment by citizenship, 2004 to 2014



## Change in first-time graduate enrollment headcounts by citizenship, 2004 to 2014



# First-time graduate enrollment among international students continues to grow in STEM





Do these findings resonate with what you know about trends in graduate enrollment?

What is driving these changes?

What are some implications for the future?

Any implications for policy?