



School of
Graduate Education

James Ahern
Vice Provost & Dean
School of Graduate Education
Professor of Anthropology
University of Wyoming
Laramie, Wyoming

jahern@uwyo.edu

Council of Graduate Schools, December 2022 Making the Case for Centralized Support for Graduate Education

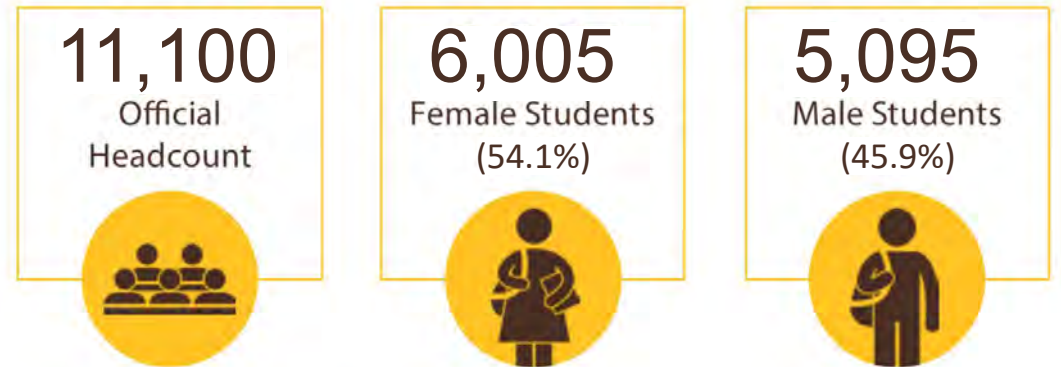




University of Wyoming

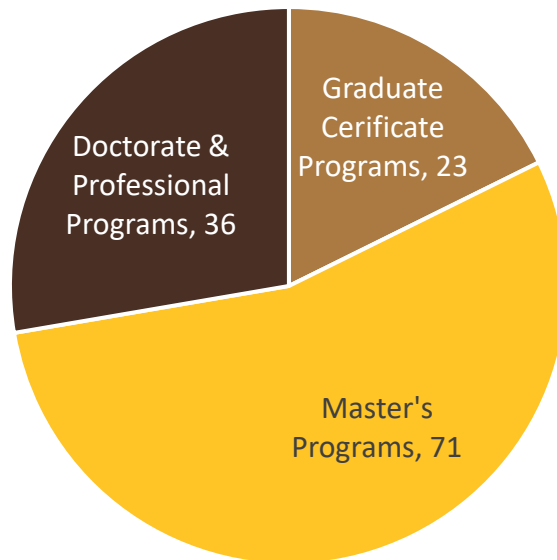
- State Flagship & Land-Grant University
- Only public, 4-year institution in state
- Doctoral – Higher Research Activity (R2)
- Located in Laramie (pop. 32,000)
- Founded in 1886

THE STUDENTS – FALL 2022



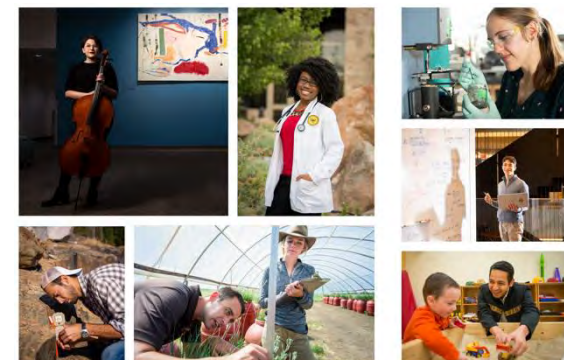
Largest Programs by Enrollment

- JD (232)
- MBA Exec. (151)
- Ed.D. (131)
- MA in Education (131)
- PharmD (102)
- MS Counseling (75)
- MPA (62)
- PhD Ecology (54)
- MA English (53)
- PhD Psychology (51)



ENROLLMENT BY LEVEL

| | | |
|-----------------------|-------|-------|
| Undergraduate | 8,518 | 76.7% |
| Graduate/Professional | 2,582 | 23.3% |





Dissolution of the Graduate School

LARAMIE BOOMERANG 2009 ☀️ 69° Sunny

News Sports Obituaries Community Opinion Advertising Photo Galleries Social Med

UW cuts 45 jobs

Campus faced with \$18.3 million to cut

By PETER BAUMANN
Boomerang Staff Writer Jun 4, 2009 0

f t e b

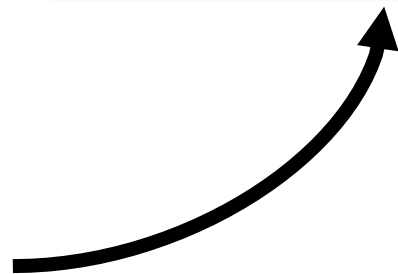
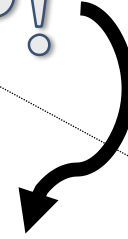
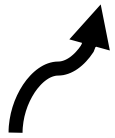
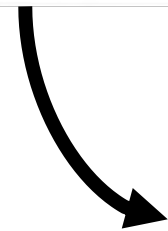
Faced with an \$18.3 million budget cut from the state of Wyoming's block grant, the University of Wyoming is taking a multi-pronged approach to address the reduction, including eliminating 45 full-time employees, eliminating target programs, reducing state funding for intercollegiate athletics, reducing library collection budgets, future tuition increases and more.

63
64 **The Graduate Council therefore proposes that the University of Wyoming:**
65
66 • **Re-establish a Graduate School.**
67
68 • Provide high-level leadership for that school—at the Dean or Vice President level.
69
70 • Provide the School and its leadership a robust budget that is capable of supporting the
71 School's primary functions.

Report

33 **Graduate Studies at the University of Wyoming**
34 **Institutional and National Leadership**
35
36 The University of Wyoming is a land grant university and the state's flagship educational
37 institution. As such, it has a responsibility to deliver graduate education at a level competitive
38 with the national and international markets where the university and its students compete.
39 Meeting this responsibility requires effective leadership within the university and representation
40 of the institution in national graduate education venues, such as the Council of Graduate Schools.
41
42
43
44
45
46
47
48
49
50
51
52
53
54
55
56
57
58
59
60
61
62
63
64 **The Graduate Council therefore proposes that the University of Wyoming:**
65
66 • Re-establish a Graduate School.
67
68 • Provide high-level leadership for that school—at the Dean or Vice President level.
69
70 • Provide the School and its leadership a robust budget that is capable of supporting the
71 School's primary functions.

Freedom!?!?





The Office of Graduate Education, Est. 2018

Maintaining

- GA allocations
- Enforcing policy
- Supporting students, faculty & staff

Rebuilding – Making Students a Higher Priority

- Reorganization & consolidation of services
- Hiring staff

Policy Development – High Quality & Flexibility

- Graduate Student Appeals Board
- Graduate Fellowships & Assistantships
- Graduate Committee Formation
- And many others

(See: <https://www.uwyo.edu/uwgrad/policies/index.html>)

Working on the Big Goals

- Support & oversight of interdisciplinary Programs
- Funding for graduate students
- Council of Graduate Schools Strategic Consultation



CGS Consultation

Graduate School

“While the consultants do not feel strongly about the name of the centralized office in support of graduate education; they do feel strongly that there should be one. At most institutions this central office in support of graduate education is referred to as the ‘Graduate School’.”

Graduate Dean

“In institutions where much of the responsibility for graduate education is decentralized, it is very important that the person in charge of OGE have excellent collegial relationships with the deans. At many institutions, a strong tie between OGE and collegiate deans is facilitated by appointing the head of OGE as a dean. The consultants recommend this change be implemented at UW.”



THE UNIVERSITY OF WYOMING CGS STRATEGIC CONSULTATION REPORT

Final Report
March 14, 2019
Review and Site Visit
November 4-7, 2018

Consultants

Cheryl Addy
Vice Provost & Dean of
the Graduate School
University of South
Carolina

Ranjit Koodali
Dean of the Graduate
School
University of South
Dakota

Scott Lanyon
Vice Provost and Dean of
Graduate Education
University of Minnesota



Wait, Didn't We already Try This? *Lessons Learned From Our Past*

What a new Graduate School Should Not Be

- Should not **duplicate** services best provided by other units.
- Should not **amass** resources.
- Should not be **siloed**.

What a new Graduate School Should Be

- As the **centralized support and leadership** for graduate education, it should provide key services.
- Should **provide resources** in alignment with need and strategic vision.
- Should be a **hub of collaboration** that fosters scholarship and interdisciplinarity.
- Should **promote and elevate** the centrality of **graduate education** in UW's Mission.



The New Graduate School, Est. September 1, 2022

2015

2017-2018

2018

2022

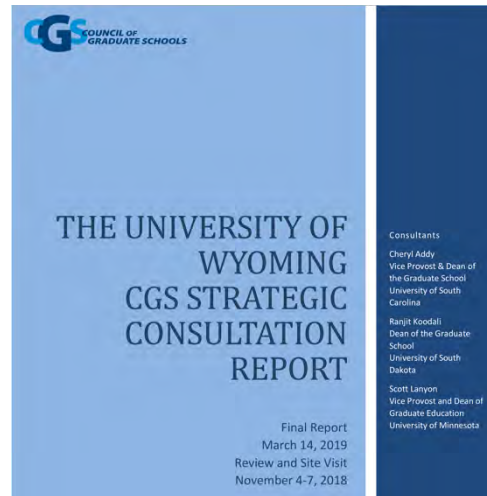
2015 Graduate Council Report

Graduate Studies at the University of Wyoming Institutional and National Leadership

The University of Wyoming is a land grant university and the state's flagship educational institution. As such, it has a responsibility to deliver graduate education at a level competitive with the national and international markets where the university and its students compete. Meeting this responsibility requires effective leadership within the university and representation of the institution in national graduate education venues, such as the Council of Graduate Schools.

The Graduate Council therefore proposes that the University of Wyoming:

- Re-establish a Graduate School.
- Provide high-level leadership for that school—at the Dean or Vice President level.
- Provide the School and its leadership a robust budget that is capable of supporting the School's primary functions.



<https://www.uwyo.edu/uwgrad/faculty-staff/c-university-of-wyoming-final-cgs-strategic-consultation-report-3-14-19.pdf>



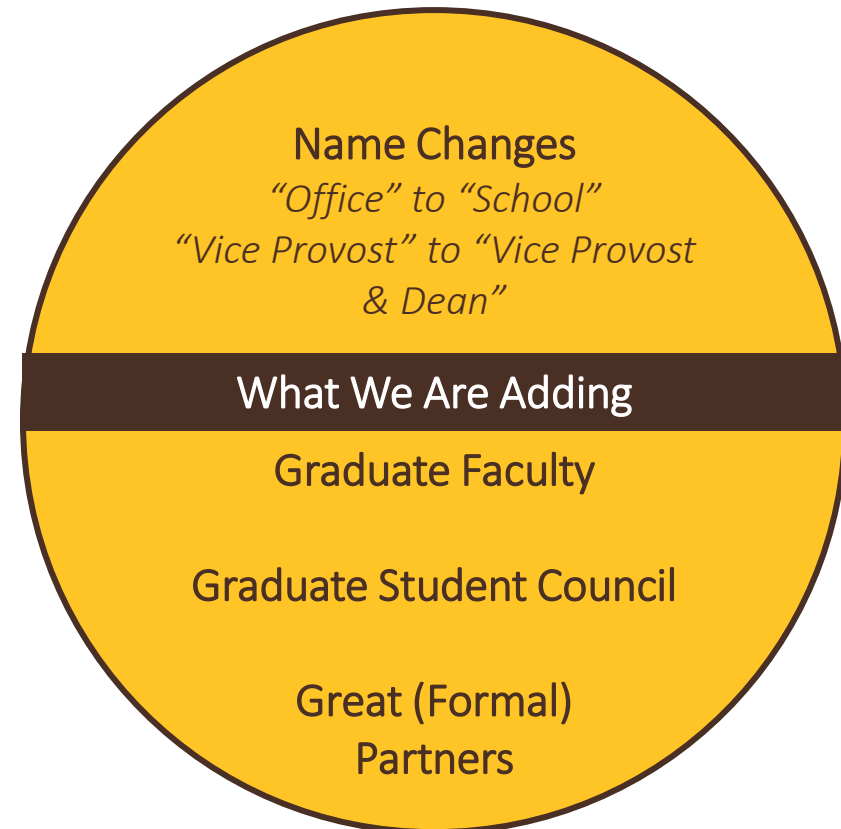


So, how much did it cost?

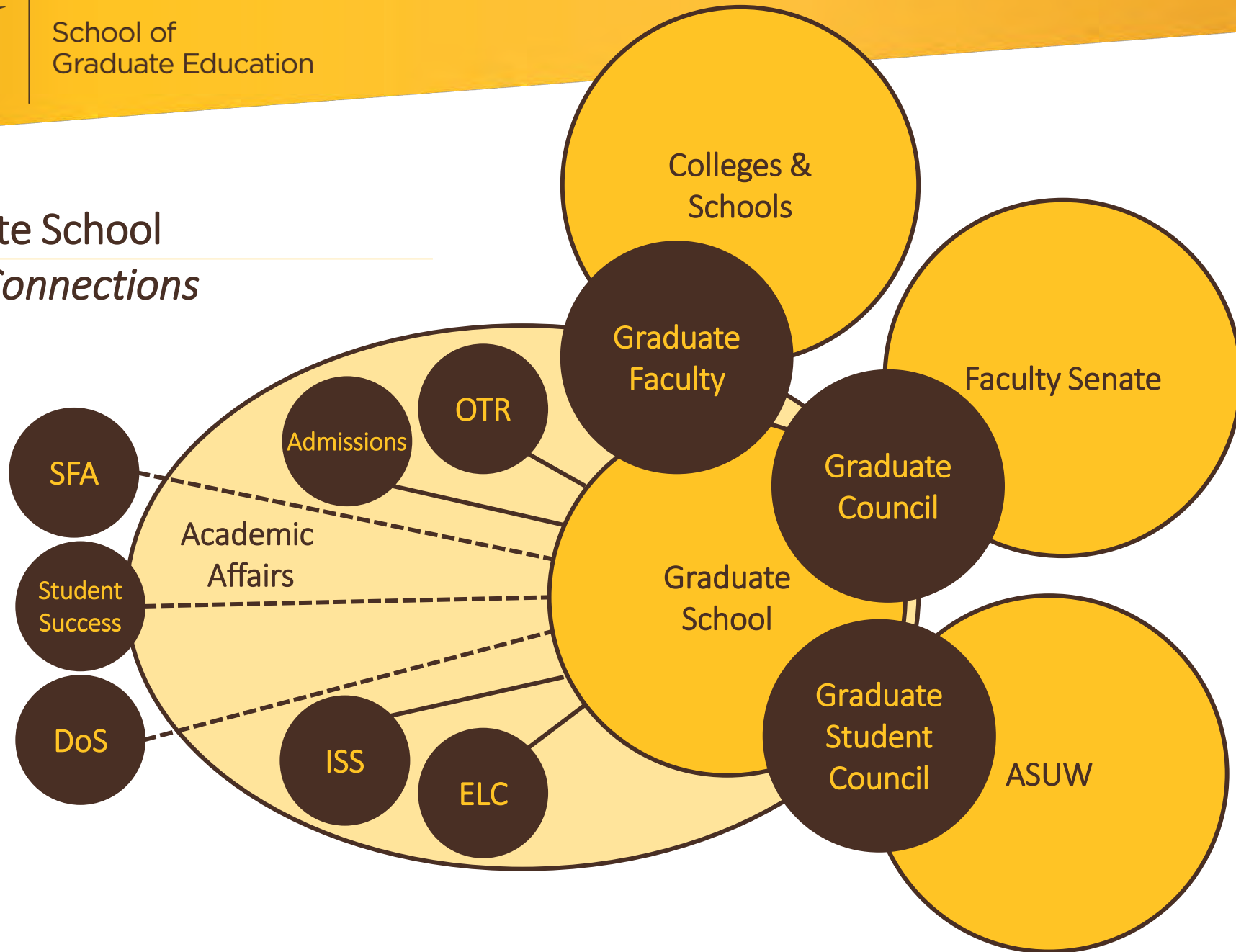
-\$300,386 for FY23

We stood up the graduate school even with a FY23 3% cut!

The New Graduate School



The New Graduate School *Organization & Connections*



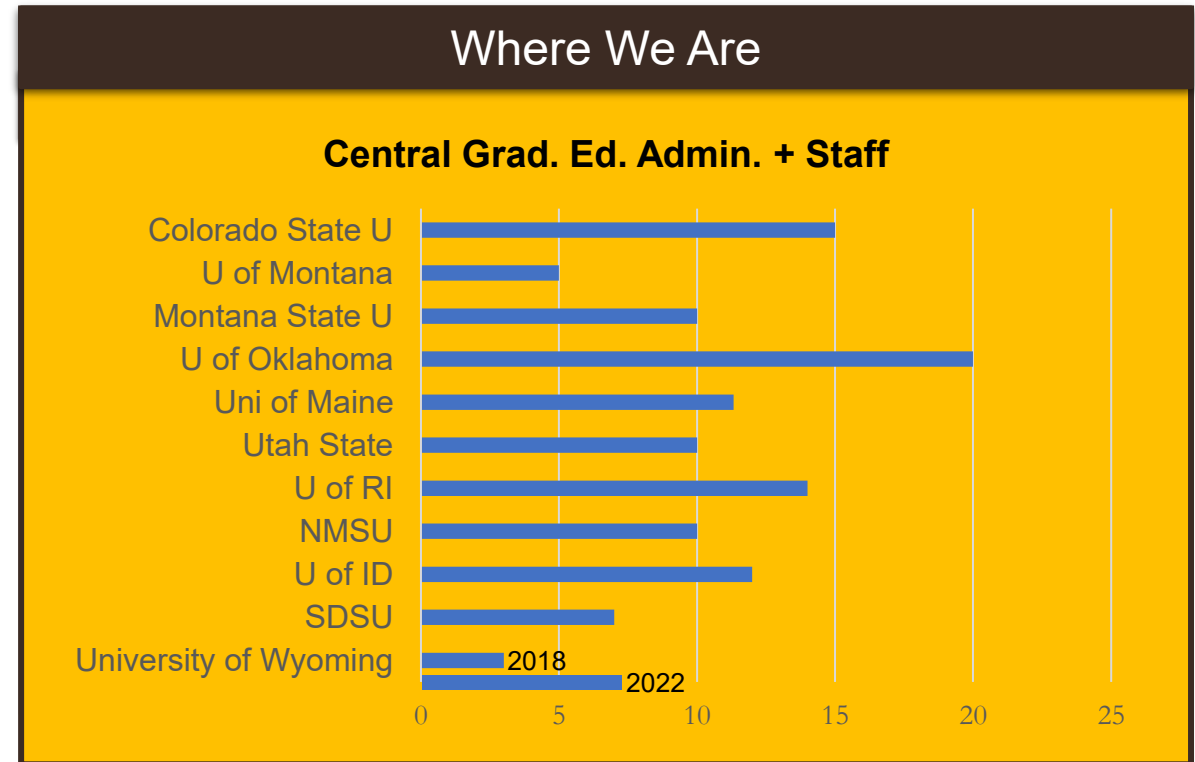
The School of Graduate Education

Current Context



- Expansion of services & scope
 - Policy & Procedure Standardization
 - Data Analytics to Support Student Success, Wellbeing & Funding
 - Marketing & Communications
 - Support for Interdisciplinary Graduate Programs
 - Support for DEI Efforts in Graduate Education
 - Professional Development for Graduate Students

- Graduate School Foundations
 - By-Laws (Graduate Faculty, Graduate Student Council)
 - Centralized Support, Buttressing Quality & Rigor
 - Serving Students, Faculty, & Staff



From 861:1 (2018) to 373:1 (2021) – graduate student:central admin FTE



How Re-Centralizing Has Made an Impact

Marketing & Enrollments

- Graduate Recruitment Initiative
- Admissions Collaborations

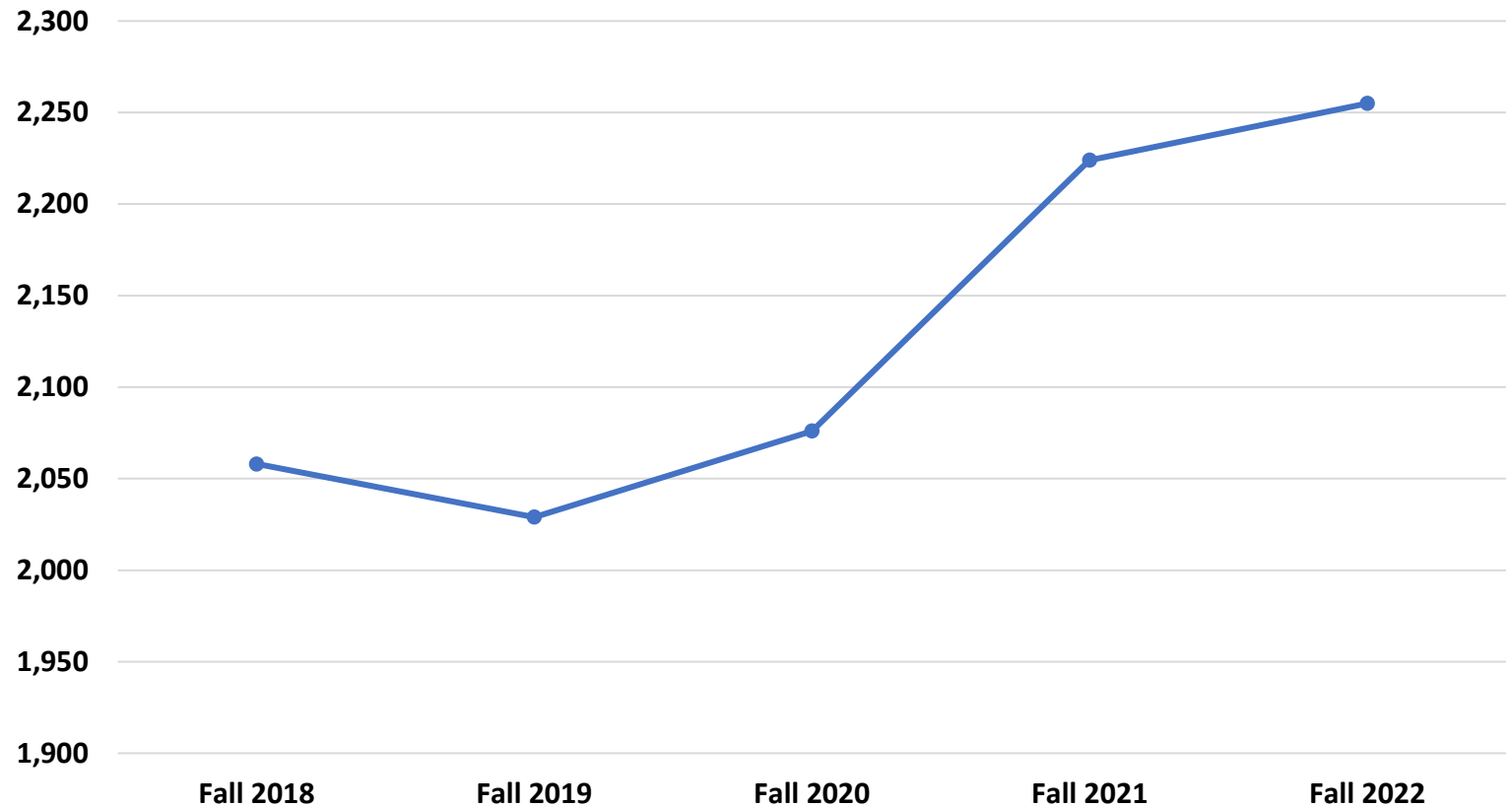
Fall 2022
2255
Highest Grad
Enrollment in
a Decade

Fall 2022
1308
Highest Master's
Enrollment Since
2014

Fall 2021
649
Highest PhD
Enrollment Ever

Fall 2022
+26.9%
Distance
Enrollments
vs. 2018

UW Graduate Enrollment



Graduate, only. Excludes Law, Pharmacy, WWAMI, & Professional Development Students



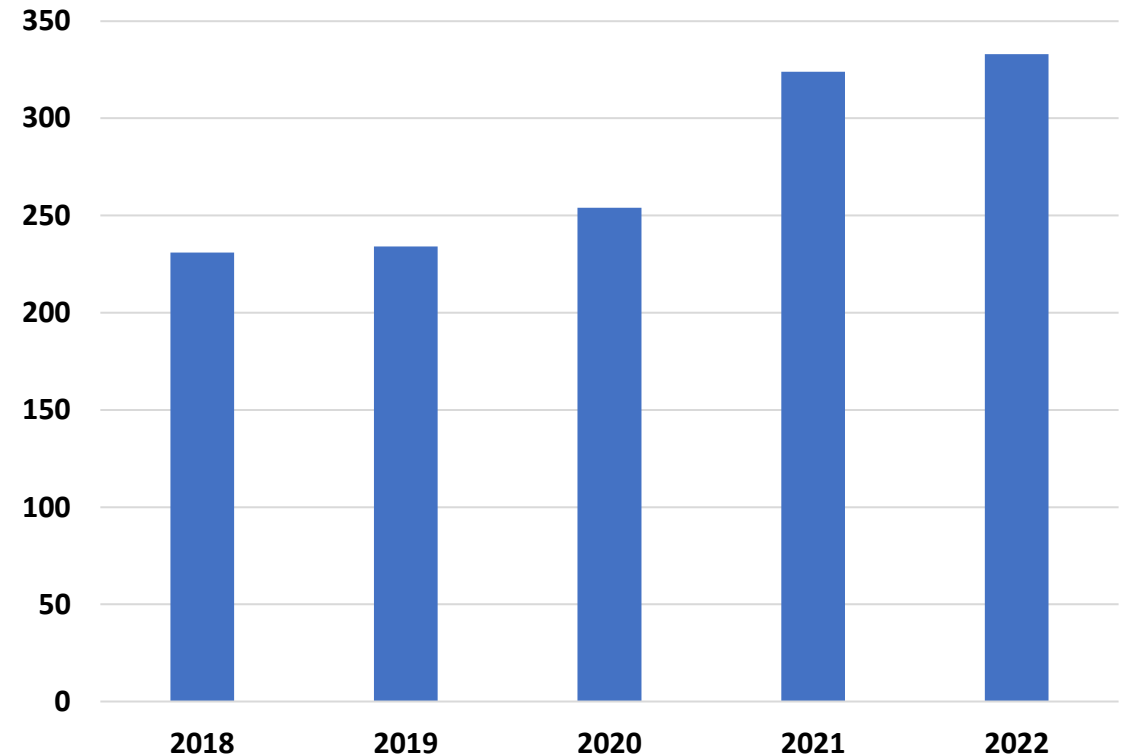
How Re-Centralizing Has Made an Impact

Diversity, Equity, & Inclusion

- URDM Recruitment Initiative
- WGE Recruitment Initiative
- Partnership with UW ODEI
 - Diverse Graduate Student Mentorship Coalition
 - URDM Mentor Training
 - Inclusion & Global Leadership Program

Fall 2022
+44.1%
URDM
vs. 2018

URDM Graduate Enrollments





How Re-Centralizing Has Made an Impact

Graduate Student Funding

- Implemented policies governing GAs, fellowships
 - Improved transparency and equity
 - GA hiring & eligibility checks
- Improved GTA budget spending
 - ≈\$700k unspent at end of FY17 vs. <\$200k in FY22
 - Full review of GTA allocations
- Partnerships with Student Financial Aid and UW Foundation
 - Improved processes
 - Oversight and support of graduate fundraising
- Secured and implemented new funding
 - Barkhurst Writing Fellowships
 - Energy Science Fellowships
 - URDM & WGE Initiatives

Policies, Processes, & Partnerships

- Graduate Admissions Oversight
- Academic Progress
 - Oversight of graduate registrar functions
 - Electronic forms
 - Steps to degree analysis & reporting
- Partnerships with other UW units to promote:
 - Established Student Ombuds
 - Recruitment & support for international students
 - Student professional development
 - Student mental health
 - Resolution of student challenges
 - Graduate Assessment