



Making the Case for Centralized Support for Graduate Education

**Council of Graduate Schools, December
2022**



William J. Karpus
Dean of the Graduate School
Professor of Pathology and Laboratory Medicine
University of Wisconsin-Madison
www.grad.wisc.edu

UW-Madison

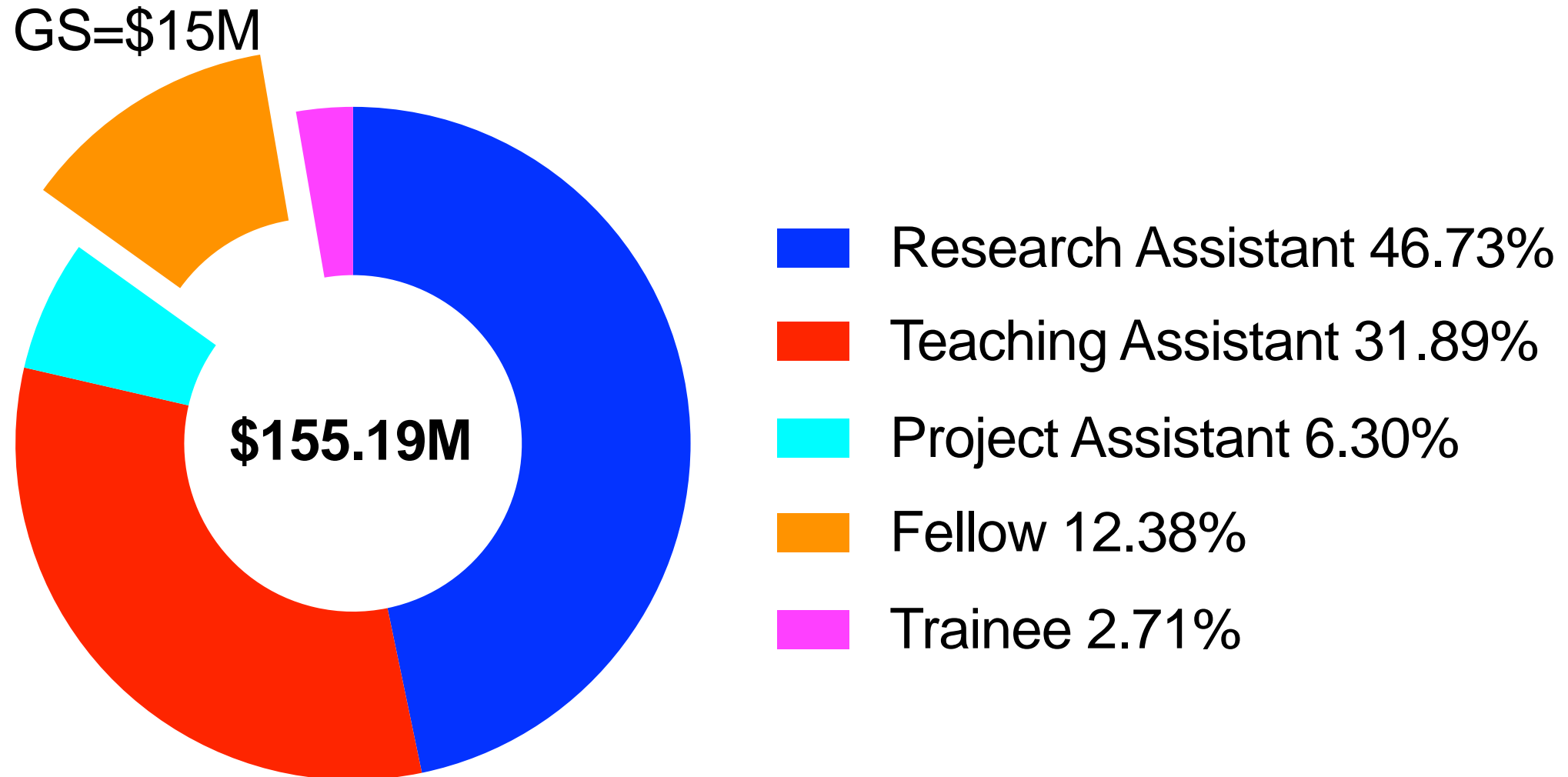
- Classification and affiliations
 - Association of American Universities-public
 - Big Ten Academic Alliance
 - American Public and Land Grant Universities
 - Council of Graduate Schools
 - Midwest Association of Graduate Schools
 - Carnegie classification: R1
 - Founding member: Coalition for Next Generation Life Science
- Graduate Enrollment
 - 11,000 total
 - 6,000 doctorate
 - 5,000 master's degree
- Programs
 - 107 doctoral
 - 165 master's degree
 - Certificates
 - Minors
- As dean, participated in two external graduate school reviews and two CGS consultations



Advantages of a Centralized Graduate School

1. Centralized funding for graduate student recruitment and diversity, equity and inclusion initiatives
2. Continuous program improvement using centralized data and planned program review
3. Centralized professional development in the support of broad career outcomes

Fall 2022 Graduate Student Financial Support



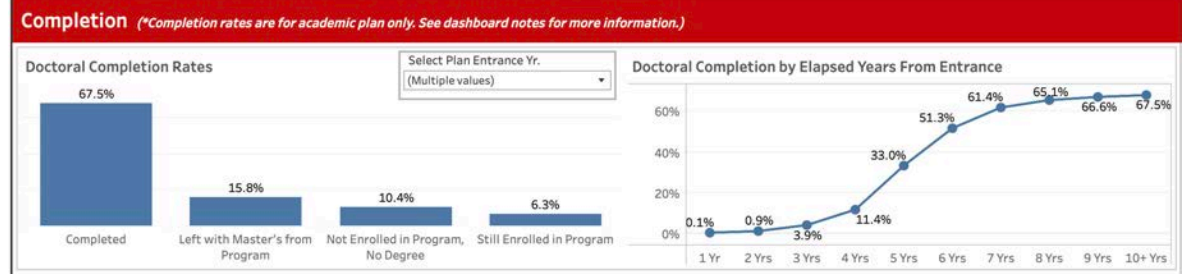
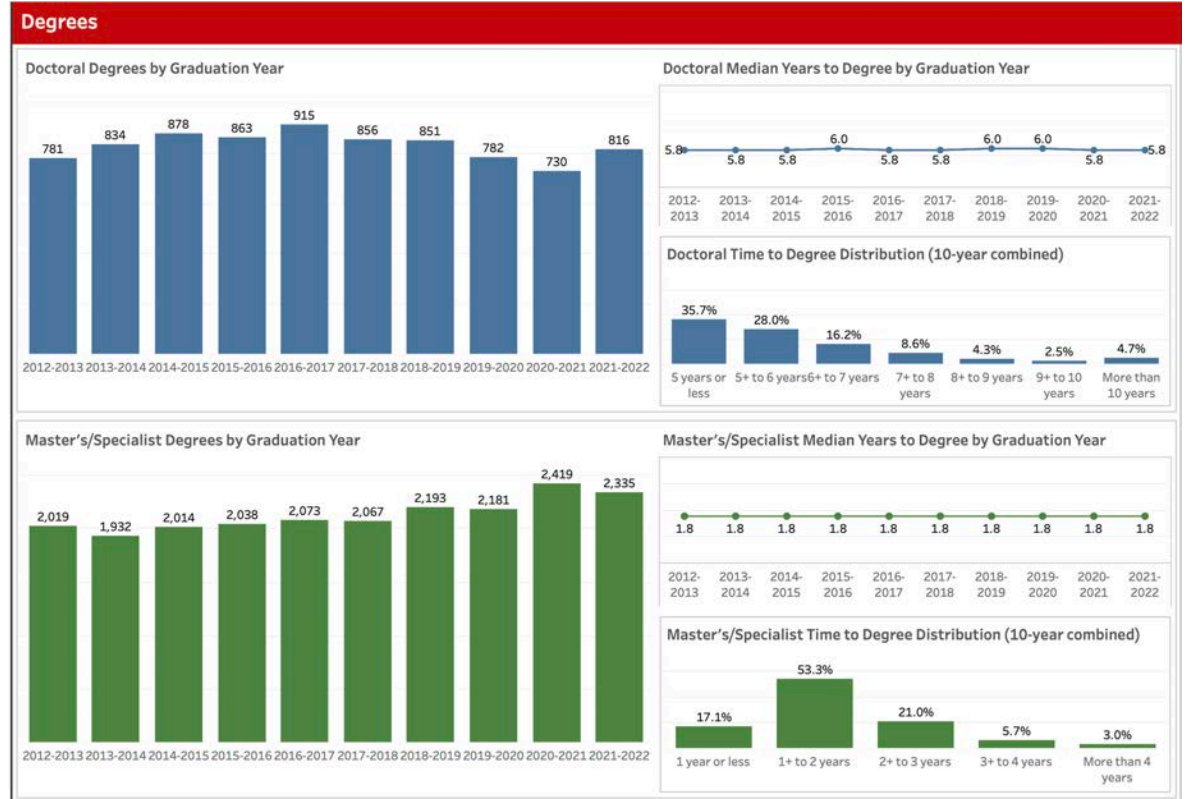
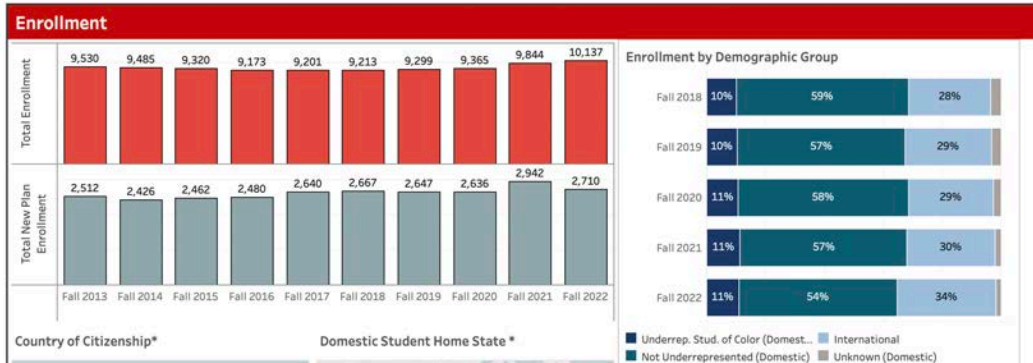
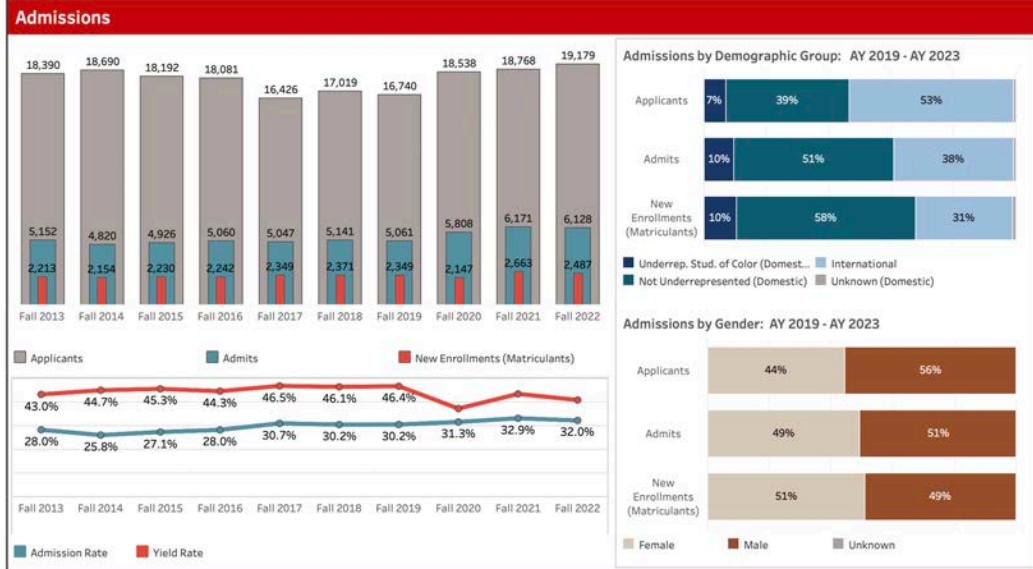
Using Central Funding for Margin of Excellence

- First year University fellowships for recruiting outstanding applicants
- Flexible funding for stipend enhancements
- Competitive counteroffers
- Advanced Opportunity Fellowships to diversify the graduate student population (recruitment and dissertation completion)
- Dissertation completion fellowships
- Supplementation of extramural fellowships
- Institutional support for training grants, bridge programs, etc.

Centralized Admissions/Degrees Data Dashboards

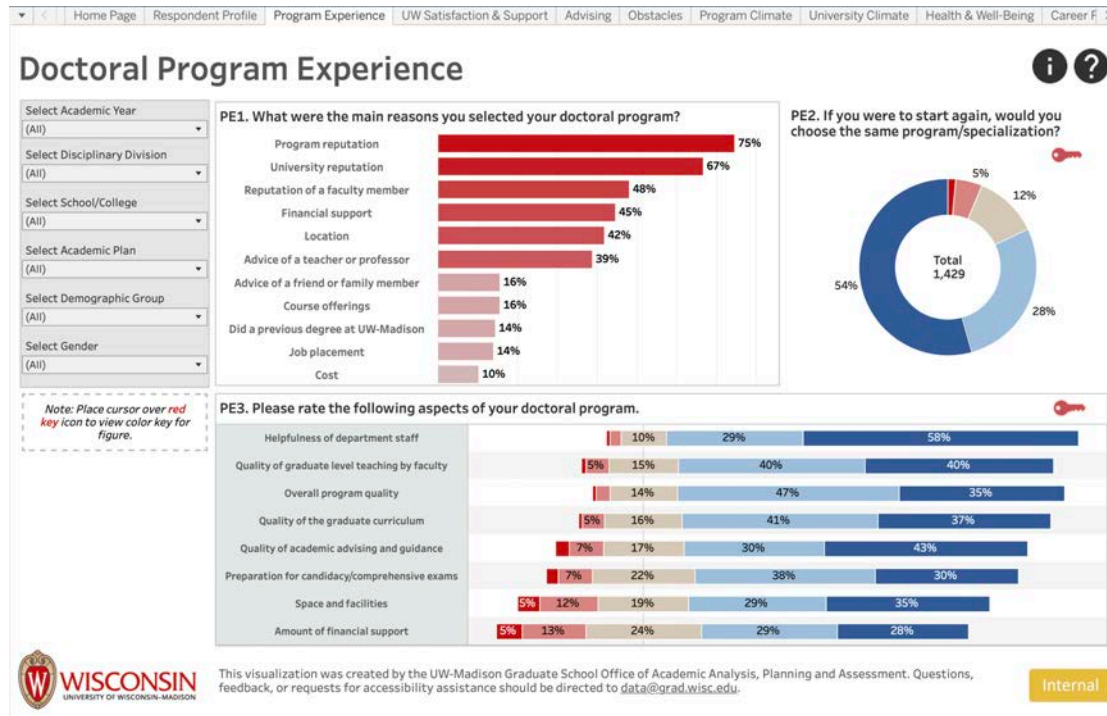
Dashboard Filters

Select Period Fall Term	Select Degree Level (All)	Select Disciplinary Division (All)	Select School/College (All)	Select Academic Plan (All)	Select Named Option (All)
	Select Plan/Option Tuition Type (All)	Select Gender (All)	Select Demographic Group (All)	Select Race/Ethnicity (All)	Select AOF Eligibility (All)

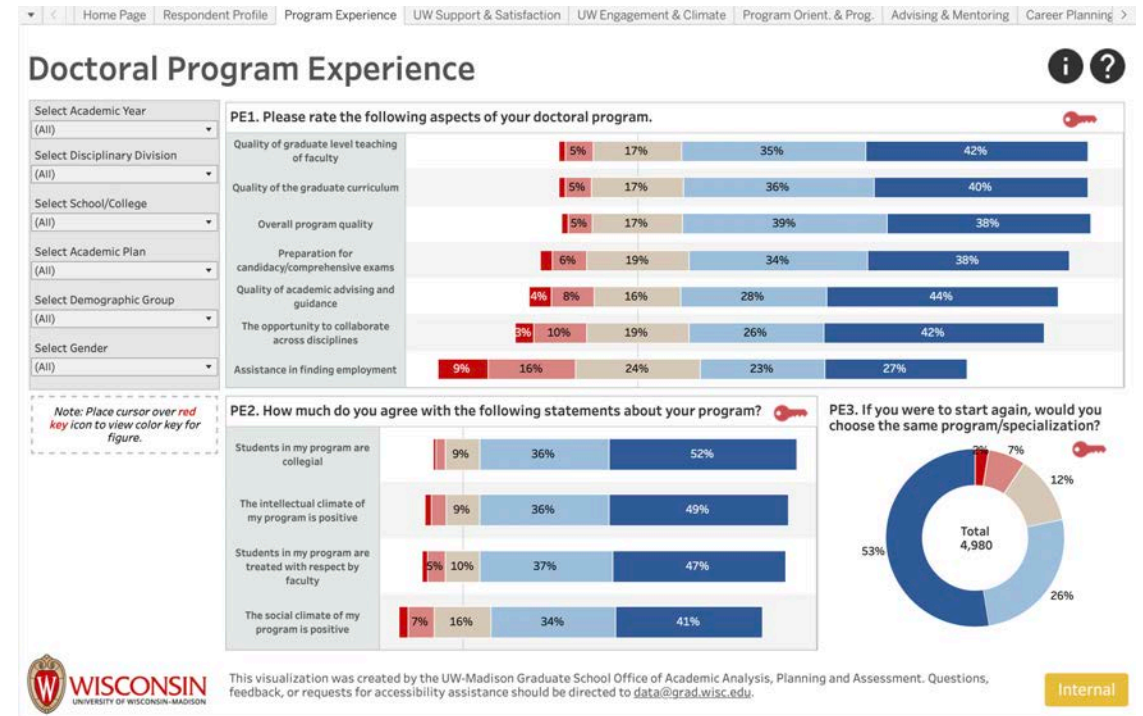


Centralized Student Experience Data Dashboards

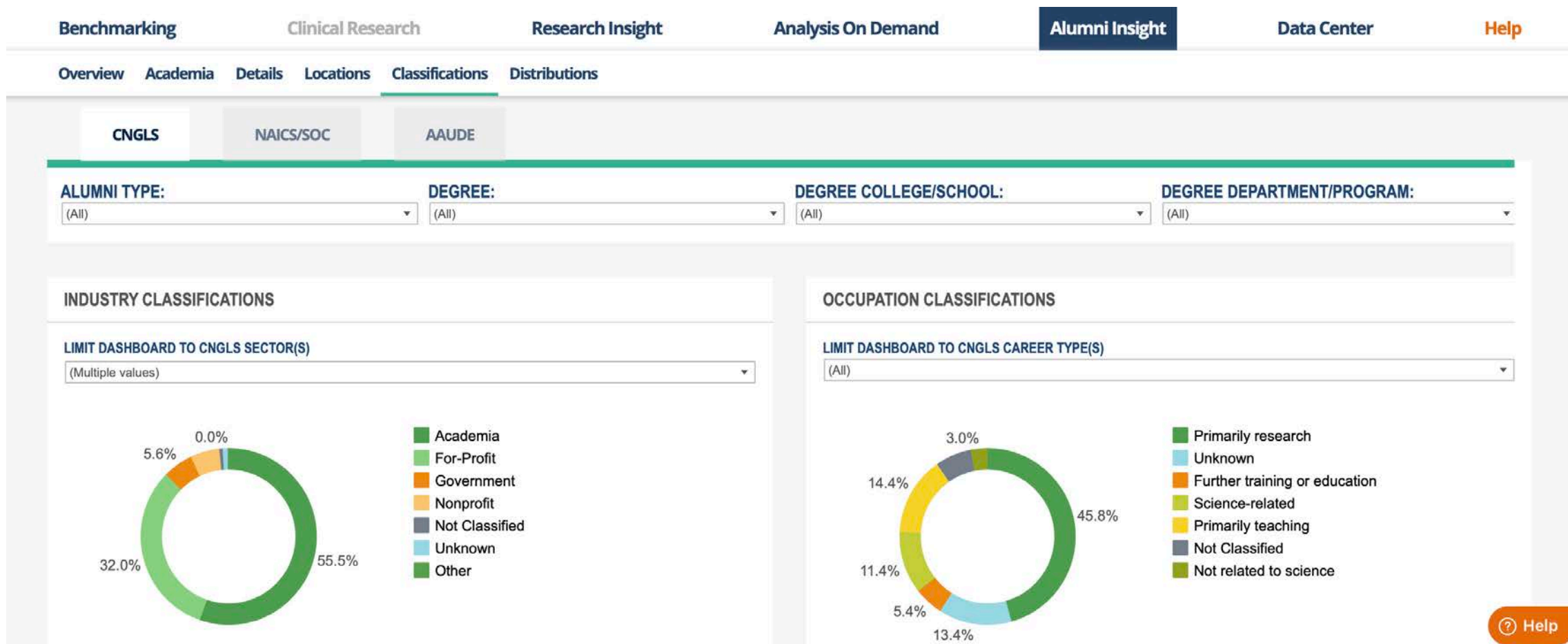
Current Doctoral Student Survey



Doctoral Exit Survey



Centralized Student Career Outcomes Dashboards



Central Professional Development

About DiscoverPD

DiscoverPD helps UW-Madison graduate students advance their academic and professional goals.

1. Start by reading the nine facets of professional development.
2. Take a **self-assessment** to get a report of your strengths and weaknesses.
3. Explore customized **recommendations** to grow in each facet, and add these to your Individual Development Plan.

Your use of DiscoverPD is private and will not be shared with your academic program. Aggregate data may be used to improve the tool.

[Read more »](#)

[Watch the video »](#)

Highlighted Recommendations

Check out the list of current highlighted recommendations below!

- [Accessibility @ UW-Madison](#)
- [Badger Bridge](#)
- [Badger Food Assistance Resource for Emergencies](#)
- [Big Ten Academic Alliance Responsible Conduct of Research Collaborative: Virtual Conference, "Mentoring Up: Resources for Success in Research Integrity"](#)
- [Canvas Course: Disability & Ableism Awareness Training](#)
- [Center for the Humanities Seminars and Workshops](#)
- [Delta](#)

DiscoverPD

Your Guide to Professional Development



Professional Development Resources



[Communicating research](#)

Three Minute Thesis® is a competition in which students explain their research to a lay audience.



[Project management](#)

A one-day workshop, as well as materials from past workshops, about project management.



[Grants and funding](#)

An introduction to the grant proposal process: planning, researching, writing, and follow-up.



[Networking](#)

Tips and resources for graduate students to improve networking experience and effectiveness.



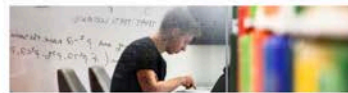
[Online learning](#)

Explore strategies to prepare to learn remotely, engage in your courses, and maximize your time.



[For Future Faculty](#)

A series aimed at preparing graduate students for careers as research and teaching faculty.



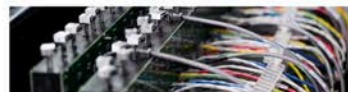
[Graduate research](#)

A micro-course on conducting research, scholarly conversations, and sharing contributions.



[Introduction to patents](#)

Learn the types of patents and patent concepts, the anatomy of a patent, and the patent process.



[Intellectual property](#)

An online micro-course about cultural, legal, and policy perspectives on intellectual property.



[Skill-building and career planning](#)

Browse the free memberships and tools available to graduate student to build skills, explore career

Events

NOVEMBER

- 11** [Discovery to Product \(D2P\) Open House](#)
12:30pm, Online
- 13** [Graduate Women in Science \(GWIS\) Madison Marathon Outreach](#)
8:00am,
- 14** [Prelim Prep Accountability Group for Graduate Students \(2 of 4\) – Meeting every Monday in November](#)
1:00pm, Online
- 14** [Fulbright US Student Program information session](#)
1:00pm, Online
- 14** [JavaScript 1 – Software Training for Students \(STS\)](#)
5:30pm, (CMC) 2257, Helen C. White Hall
- 15** [Discovery to Product \(D2P\) Open House](#)
4:30pm, Online
- 15** [Writing Center Workshop – Grammar 3: Clauses \(virtual\)](#)
5:00pm, Online
- 15** [Audacity – Software Training for Students \(STS\)](#)
5:30pm, (CMC) 2257, Helen C. White Hall
- 16** [Introduction to Docker – Fall 2022 Mini Workshop Series](#)
9:00am,
- 16** [How to prepare for a video interview for an academic job](#)
11:00am, Online
- 16** [NIH Data Management & Sharing Policy Drop-ins](#)
12:00pm, 2158 Health Sciences Learning Center
- 16** [NIH Data Management & Sharing Policy Drop-ins](#)
12:00pm, BioCommons, Steenbock Library
- 16** [R – Software Training for Students \(STS\)](#)
5:30pm, (CMC) 2257, Helen C. White Hall

[MORE EVENTS >](#)

Graduate School Team

Funding and DEI



Marcy Carlson



Abbey Thompson



Jeff Cary



Doua Lee

Data and Analysis



Parmesh Ramanathan



Jenna Alsteen



Peter Kinsley



Nick Sigmund

Professional Development



Alissa Ewer



Eileen Callahan



Amy Fruchtman



Jessica Maher



Devin Wixon



Meghan Cua