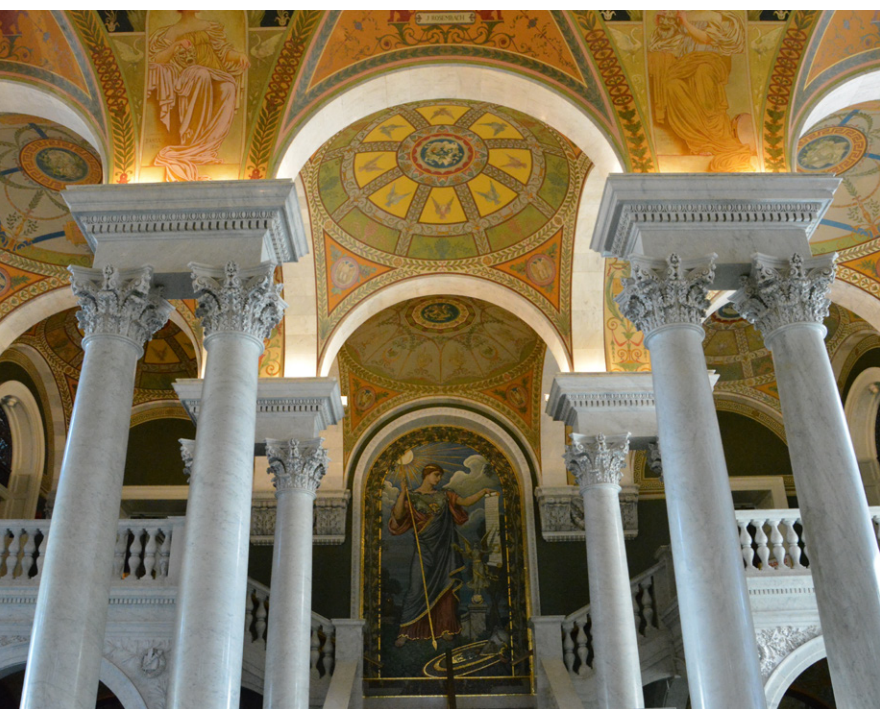




CGS PARTNERSHIP PROSPECTUS

# 2025 Annual Meeting

December 3-6 | Washington, DC





# About CGS

Since 1961, the Council of Graduate Schools (CGS) has been the only U.S. organization dedicated solely to the advancement of graduate education and research. When you reach CGS members, you reach graduate deans, major university decision-makers. CGS graduate deans represent approximately 450 universities in the U.S., Canada, and a diverse range of international institutions.

## Contents

- 1 About CGS
- 2 Top Priorities for Graduate School leaders
- 3 Benefits of Exhibiting and Sponsoring
- 4 Propose a Session
- 6 Sponsorship Opportunities
- 8 Engagement Beyond the Meeting
- 11 CGS Members
- 15 Exhibitor Registration Form

# ABOUT



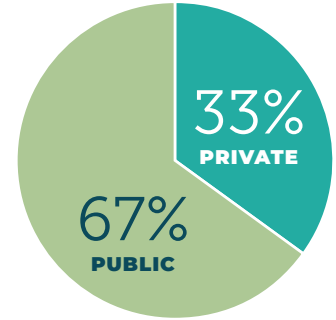
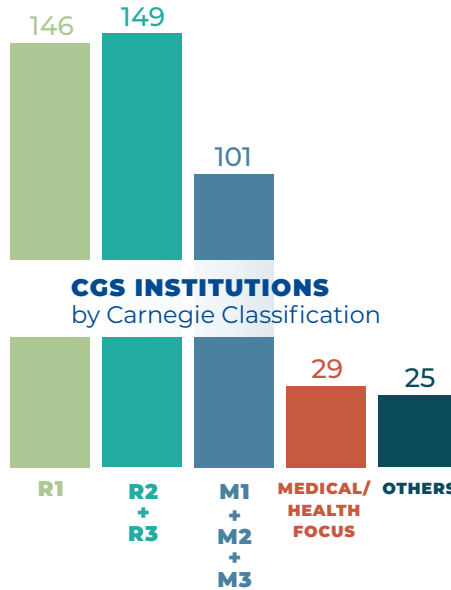
## OUR MEMBERS

# 450

U.S. AND  
CANADIAN MEMBER  
UNIVERSITIES

# 25

INTERNATIONAL  
MEMBERS



The Carnegie classification system categorizes PhD-granting institutions by level of research activity (R1 = highest) and master's colleges and universities by the number of degrees awarded (M1 = larger).

as of January 1, 2025

## DEGREES

### CGS MEMBERS IN THE U.S. AWARD

# 80.8%

of all **DOCTORAL DEGREES**

for an annual total of

# 64,922

research/scholarship  
doctoral degrees

# 58.4%

of all **MASTER'S DEGREES**

for an annual total of

# 522,387

master's degrees



For more information and data sources  
visit [cgsnet.org/about](https://cgsnet.org/about).

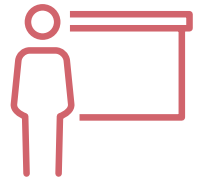
## STUDENTS

# 1,766,443

**AGGREGATE ENROLLMENT**  
(master's and doctoral students)

# 365,284

**ASSISTANTSHIPS SUPPORTED**



## RESEARCH

# \$62,768,530,107

**R&D EXPENDITURES**

# \$52,136,011,488

**FEDERAL RESEARCH DOLLARS AWARDED**

# Who Attends the CGS Annual Meeting?

Forty percent of attendees are graduate deans, senior university decision-makers with authority in admissions, benchmarking, curriculum, learning assessment, and online education. Another 30 percent are assistant or associate deans. The remaining 30 percent of attendees serve in some other university role such as provost, director of admissions, director of diversity, or director of graduate studies in a department or are employed by a non-university organization.

## THE 2024 CGS ANNUAL MEETING ATTRACTED ATTENDEES FROM

47 States  
AND THE DISTRICT  
OF COLUMBIA

230  
UNIVERSITIES

8  
COUNTRIES

32  
OTHER ORGANIZATIONS,  
COMPANIES AND  
FEDERAL AGENCIES

## Top Priorities for Graduate School Leaders

- Admissions, recruitment, and enrollment
- Assessing student and/or workforce demand for graduate programs
- Badges, stackable credentials, and other non-degree graduate education
- Data analytics and machine learning in graduate education administration
- Diversity, equity, and inclusion
- Faculty and advising
- Graduate student mental health and graduate program climate
- Online graduate education
- Organizational structure and infrastructure, including graduate school technology
- Student financial support
- Student professional development and career outcomes

*“CGS Annual Meeting is unmatched in its ability to connect graduate deans with peers, engage in meaningful dialogue about the future of graduate education, and explore innovative solutions to shared challenges. With its diverse sessions, collaborative atmosphere, and focus on emerging trends, the meeting empowers leaders to drive impactful change.”*

—EMORY WOODARD  
Dean of Graduate Studies, College of Liberal Arts and  
Sciences, Villanova University



# Benefits of & SPONSORING & EXHIBITING

## KEY DEADLINES

May 16, 2025	Early-bird exhibitor registration due
May 16, 2025	Session proposals due
July 31, 2025	Reserve sponsorships by this date
October 31, 2025	Exhibitor registration form due

## Exhibitors Receive

- Registration for up to two representatives of your company. Includes full access to meeting sessions, all meal functions open to regular attendees, receptions, and refreshment breaks.
- Option to add one complimentary exhibit-hall only registration pass to your 2025 CGS Annual Meeting exhibitor registration, in addition to the two full registrations that are included with exhibiting (available only to sustaining members)
- Option to select exhibit table location (available only to sustaining members)
- Company description and link to your website on the CGS website
- Mailing labels (pdf format) of all Annual Meeting participants as of November 7. Sustaining members receive the list in Excel as well.
- Acknowledgment in Annual Meeting mobile app
- Six-foot skirted display table
- Internet access

## Meeting Sponsors Receive

- One complimentary ad in *GradEdge* newsletter
- Acknowledgment of your company in electronic mailing promoting the Annual Meeting
- Special thanks from the CGS President in their opening remarks to the meeting
- Projection of company logo via PowerPoint slide in general session room
- Acknowledgment in Annual Meeting mobile app and on the CGS website
- Additional benefits listed in individual sponsorship description

See *Exhibitor Registration form* on page 15.



## Social media promotion is part of the package

All special event sponsorships (e.g., breakfasts, receptions) come with the guarantee of at least one dedicated “thank you” post from CGS linked to the conference hashtag, #CGSAM2025.



## CGS Terms & Conditions

### Right of Refusal

CGS reserves the right to refuse to rent exhibit space, to release a sponsorship, or to deny membership in the Sustaining Membership Network to any applicant.

### Disavowal of Endorsement

CGS's acceptance of a contract with a potential exhibitor, sponsor, or Sustaining Membership Network member is not, and should not be construed as an endorsement by CGS of the organization or of its products or services.

### Guarantee Policy

Sponsorships and exhibit space are guaranteed once payment has been received. All payments are subject to the CGS refund policy as specified in the sponsorship agreement.

# Propose a Session

## Call for Proposals

Members of the non-profit and business communities help the Council of Graduate Schools fulfill its mission of advancing graduate education. To help our members benefit from the expertise of industry leaders, CGS invites proposals from companies and non-profits to propose Annual Meeting sessions of interest to the CGS membership. Companies and

non-profits gain valuable opportunities to engage with leadership and staff from CGS's 450 member universities. CGS members are national and international thought leaders in their fields, and at the Annual Meeting they share up-to-date information about needs and trends in graduate education.

## Lightning Sessions

FRIDAY, DECEMBER 5, 2025, 1:15-1:45 p.m.

4 SPOTS AVAILABLE

MEMBERS: \$4,500; NONMEMBERS: \$6,000

These **30-MINUTE SESSIONS** are an opportunity to share, demonstrate and discuss a recent innovation in graduate education with graduate deans and staff. While we welcome proposals on any topic, CGS gives particular priority to proposals focused on areas of special interest to graduate education administrators:

- Graduate enrollment management
- Supporting student retention and success
- Diversity and inclusion
- Online education
- Professional development for graduate students
- Business analytics for graduate schools and programs
- International student recruitment

### Benefits

- Visibility among attendees at the largest national meeting of graduate deans and staff
- 30-minute session led by representatives of your company
- Opportunity to share recent innovations in your field
- Opportunity to present meaningful content to CGS community
- Recognition as the session sponsor in the CGS Annual Meeting mobile app
- Recognition as an Annual Meeting sponsor in Annual Meeting mobile app and on the CGS website

### Session Guidelines

- Panel may endorse a particular product or service
- Panel should not serve as a focus group
- Please submit proposals via the [online form](#) or a single pdf attachment to [cbright@cgs.nche.edu](mailto:cbright@cgs.nche.edu)
- If proposal is selected, proposer agrees to pay all costs within 30 days of selection notice

### Proposal Guidelines

- Proposal should not exceed two pages, single spaced
- Proposal should include contact information for primary contact as well as the names and affiliations of potential speakers
- Proposals will be evaluated according to the following criteria:
  - Potential interest to graduate deans and staff
  - Integration of relevant data and/or case studies
  - Established record of success with the innovation(s) you plan to share
  - Knowledge and expertise of presenters

# PROPOSALS DUE: MAY 16, 2025



## Concurrent Sessions

THURSDAY, DECEMBER 4 AND FRIDAY, DECEMBER 5, 2025  
4 SPOTS AVAILABLE  
MEMBERS: \$7,000; NONMEMBERS: \$9,500

These **ONE-HOUR SESSIONS** are integrated into CGS's regular programming of concurrent sessions. Your company is invited to collaborate with clients or colleagues to demonstrate its thought leadership on pressing issues in graduate education.

### Benefits

- Visibility among attendees at the largest national meeting of graduate deans and staff
- One-hour concurrent session led by representatives of your company
- Opportunity to demonstrate thought leadership
- Opportunity to present meaningful content to CGS community
- Recognition as the session sponsor in the CGS Annual Meeting mobile app
- Recognition as an Annual Meeting sponsor in Annual Meeting mobile app and on the CGS website

### Session Guidelines

- Panel content should not exceed 45 minutes, to allow ample time for questions (2-3 speakers is optimal)
- Panel should not be focused on a particular product or service
- Panel should not serve as a focus group
- Please submit proposals via the [online form](#) or a single pdf attachment to [cbright@cgs.nche.edu](mailto:cbright@cgs.nche.edu)
- If proposal is selected, proposer agrees to pay all costs within 30 days of selection notice

### Proposal Guidelines

- Proposal should not exceed two pages, single spaced.
- Proposal should include contact information for primary contact as well as the names and affiliations of potential speakers. At least one graduate dean at a member university should present at the session.
- Proposals will be evaluated according to the following criteria:
  - Addresses pressing issue in graduate education
  - Knowledge and expertise of presenters
  - Commitment of at least one graduate dean at a CGS member university to participate
  - Integration of relevant data or examples
  - Novelty (avoids overlap with other sessions likely to be held at this year's Annual Meeting)



# Sponsorship Opportunities



## Lanyards

Your company's name and logo will be prominently featured on the lanyards that meeting attendees will use to wear their nametags throughout the meeting. An added benefit of this sponsorship is that lanyards are often visible in meeting photos.

MEMBERS: \$6,500; NONMEMBERS: \$8,000

## Hotel Room Key Cards

Reach nearly all the meeting registrants with your company's name and logo printed on the back and front of hotel room key cards. Presented at check-in to each attendee, key cards ensure that your company's name will be encountered early and repeatedly throughout the meeting.

MEMBERS: \$9,500; NONMEMBERS: \$11,000

## Conference Wi-Fi

Provide CGS Annual Meeting attendees with complimentary Wi-Fi that is available throughout the exhibit hall and meeting spaces. Sponsorship includes the opportunity to select a custom password, logo recognition on the meeting mobile app, signage throughout the meeting, and acknowledgement in the CGS President's opening remarks.

MEMBERS: \$6,500; NONMEMBERS: \$8,000

## Conference Mobile App

Prominently feature your company's brand and expertise by sponsoring the Annual Meeting mobile app. The ad can link to an external webpage featuring a white paper, case study or other online marketing materials you would like to feature. In addition, your sponsorship will be recognized with a sign at the registration desk, and verbal recognition of the sponsorship during the meeting.

MEMBERS: \$6,500; NONMEMBERS: \$8,000

## Assistant & Associate Deans' Breakfast

**Thursday, December 4**

Create brand recognition for your company and connect with emerging leaders in graduate education at this annual breakfast for assistant and associate deans. Receive recognition from the CGS leadership at the opening to this breakfast and provide materials at every table.

MEMBERS: \$5,750; NONMEMBERS: \$7,000



## MEMBERS RECEIVE EXCLUSIVE BENEFITS

Companies and organizations are invited to apply to join the CGS Sustaining Membership Network. Membership provides access to discounted pricing, insider information, and more. To learn about becoming a member, please contact Colton Bright at [cbright@cgs.nche.edu](mailto:cbright@cgs.nche.edu).



# AT THE CGS 65<sup>TH</sup> ANNUAL MEETING

## Plenary Session Sponsorships

Thursday, December 4 (afternoon plenary)

Friday, December 5 (morning plenary)

Friday, December 5 (afternoon plenary)

The CGS Annual Meeting plenary sessions, which feature notable speakers on pressing issues in graduate education, attract the largest audiences at the Annual Meeting. Benefits of this highly visible sponsorship include the option to provide a brief video about your company or for a company representative to deliver brief non-commercial remarks to all meeting attendees before the plenary session is introduced. A CGS leader will recognize and thank the sponsor and introduce the video or company representative. In addition, sponsors receive logo recognition on session signage and may place brochures or publications on designated materials tables in the plenary session room or include an electronic resource in the session description in the meeting mobile app.

MEMBERS: \$5,000; NONMEMBERS: \$6,500

## Breakfast Presentations for All Attendees

Thursday, December 4

Friday, December 5

Saturday, December 6

In sponsoring a breakfast open to all meeting attendees, a spokesperson from your organization will give a 30-minute presentation, followed by a question-and-answer session with CGS deans. This is an opportunity to offer expertise on a trend in graduate education, present a new product or service, and gain valuable insights and feedback from decision-makers in the graduate school. During the breakfast, the @CGSGradEd Twitter account will tweet a “thank you” to your company that will be linked to the meeting hashtag (#CGSAM2025).

PLEASE INQUIRE ABOUT PRICING.

## Evening Reception for All Attendees

Thursday, December 5

After a busy day of panel sessions, the Thursday evening reception offers Annual Meeting attendees an opportunity to relax, network, and discuss ideas shared in meeting sessions. By sponsoring this well-attended event, your company will be acknowledged by the CGS President during the opening plenary session. Exclusive or lead reception sponsors will be invited to deliver brief welcoming remarks. During the reception, @CGSGradEd will acknowledge your company in a thank-you tweet linked to the meeting hashtag (#CGSAM2025).

PLEASE INQUIRE ABOUT PRICING FOR EXCLUSIVE OR LEAD SPONSORSHIP OPTIONS.

RECEPTION CO-SPONSORSHIP (UP TO 4 CO-SPONSORS):

MEMBERS: \$6,000; NONMEMBERS: \$7,500

## Propose a Sponsorship

Don't see your ideal sponsorship opportunity listed here? Propose a unique sponsorship that brings value to your company as well as to CGS member institutions. Please note that proposals are subject to approval by CGS and pricing is determined on a case-by-case basis.



Triple your impact with #CGAM2025

Did you know? CGS's LinkedIn account has nearly 3,000 followers, over 60% of whom are in leadership positions. Engagement with CGS social media triples during the Annual Meeting.



# Engagement **BEYOND** the Meeting

## Become a Member

CGS invites organizations with an interest in promoting graduate education to apply for membership in the CGS Sustaining Membership Network. Membership gives companies and organizations:

- Exclusive opportunities for visibility with CGS institutions at the Annual Meeting and throughout the year.
- Timely access to graduate education data and insider knowledge.
- Discounts on CGS meeting registrations, exhibitor fees, webinars, workshops, print publications, and more.
- Additional benefits accrue with increased levels of investment.

Annual dues range from \$1,000 – \$25,000.

To learn more about applying for membership, please contact Colton Bright at [cbright@cgs.nche.edu](mailto:cbright@cgs.nche.edu).





# Sponsor A Webinar

Interact with the graduate education community in real time: submit a proposal to lead a webinar on a pressing graduate education issue, or cosponsor a planned CGS webinar. Recent CGS webinars have drawn 100-300+ participants, plus as many as 200 views on YouTube after the live webinar.

Members \$2,000 - \$6,000

Nonmembers \$2,500 - \$7,000

To learn more about the CGS sponsored webinar program, please contact Colton Bright at [cbright@cgs.nche.edu](mailto:cbright@cgs.nche.edu).



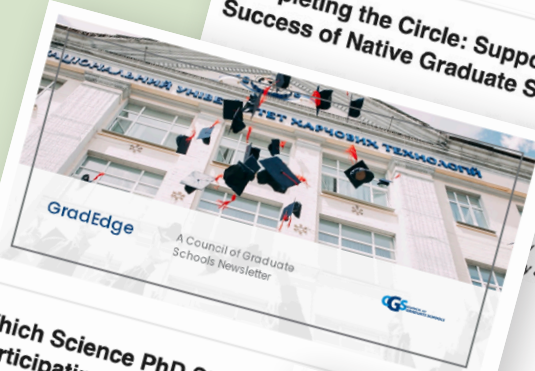
# Advertise in *GradEdge*

The quarterly *GradEdge* newsletter brings the latest in graduate education news to its members. With a distribution list of over 2,300 individuals, *GradEdge* reaches the top decision-makers in graduate education. Use the newsletter to place advertisements for products, services, events, and ideas relevant to the graduate education community. Your ad will appear on the landing page and at the end of every article.



## Completing the Circle: Supporting the Success of Native Graduate Students

TS/CGS Award for  
ion.  
rogram  
of Montana  
y and Programs.



## Which Science PhD Students Participating in Professional Research in Brief

Underrepresented Minority (URM) and women science in greater numbers in academic professional development new research brief from CGS.  
Using data from CGS's PhD Career Pathways project, science doctoral students participate in professional development that differs by race and gender.  
The brief also shows that science doctoral students' professional development that is sponsored by their PhD programs  
Given that minority graduate students and women remain underrepresented in graduate education and in the STEM workforce, participation can help us understand the potential impact of development investments as well as opportunities for



## What Does the Future Hold for International Graduate Education?

By Suzanne T. Ortega  
A new year brings new opportunities, and it's a great time to look ahead to the trends and issues in graduate education. I've spent this month reflecting on the internationalization of graduate education and how we can better serve international scholars and create more global networks.

We first need to address some of the issues facing graduate students, international and domestic, and look at how we can prepare ourselves and students for a new global education landscape.

In recent years, we have seen some major shifts in graduate education, especially regarding international enrollment rates. There are key issues we need to address and prepare ourselves for the continued changes in graduate education. [Read more](#) to learn what Suzanne Ortega says about the internationalization of graduate education.



50%

Average **OPEN RATE**

Industry average is 24%

24%

Average **CLICK RATE**

Industry average is 3-5%

Members \$600

Nonmembers \$1,200

For more information about advertising in *GradEdge*, please contact Colton Bright at [cbright@cgs.nche.edu](mailto:cbright@cgs.nche.edu).

# CGS Members

## ALABAMA

Alabama A&M University  
Alabama State University  
Auburn University  
Jacksonville State University  
The University of Alabama  
The University of Alabama at Birmingham  
The University of Alabama in Huntsville  
University of Montevallo  
University of South Alabama

## ALASKA

University of Alaska Anchorage  
University of Alaska Fairbanks

## ARIZONA

Arizona State University  
Northern Arizona University  
University of Arizona

## ARKANSAS

Arkansas State University  
Arkansas Tech University  
University of Arkansas  
University of Arkansas at Little Rock  
University of Central Arkansas

## CALIFORNIA

Azusa Pacific University  
California Institute of Integral Studies  
California Institute of Technology  
California Polytechnic State University  
California State University, Bakersfield  
California State University, Fresno  
California State University, Los Angeles  
California State University, Monterey Bay  
California State University, Sacramento

California State University, San Bernardino  
California State University, Stanislaus  
Chapman University  
Fielding Graduate University  
Loma Linda University  
National University  
San Diego State University  
San Jose State University  
Stanford University  
The Claremont Graduate University  
University of California, Berkeley  
University of California, Davis  
University of California, Irvine  
University of California, Los Angeles  
University of California, Merced  
University of California, Riverside  
University of California, San Diego  
University of California, San Francisco  
University of California, Santa Barbara  
University of California, Santa Cruz  
University of Southern California  
University of the Pacific

## COLORADO

Adams State University  
Colorado School of Mines  
Colorado State University  
Colorado State University Pueblo  
Metropolitan State University of Denver  
University of Colorado  
University of Colorado Denver Anschutz Medical Campus  
University of Colorado Boulder  
University of Colorado Denver

University of Colorado, Colorado Springs  
University of Denver  
University of Northern Colorado

## CONNECTICUT

Sacred Heart University  
Southern Connecticut State University  
University of Bridgeport  
University of Connecticut  
Wesleyan University  
Yale University

## DELAWARE

University of Delaware

## FLORIDA

Florida A&M University  
Florida Atlantic University  
Florida Gulf Coast University  
Florida International University  
Florida State University  
University of Central Florida  
University of Florida  
University of Miami  
University of North Florida  
University of South Florida  
University of West Florida

## GEORGIA

Augusta University  
Clark Atlanta University  
Emory University  
Georgia Institute of Technology  
Georgia Southern University  
Georgia State University  
Kennesaw State University  
Morehouse School of Medicine  
University of Georgia  
University of North Georgia  
Valdosta State University

## HAWAII

University of Hawaii at Manoa

## IDAHO

Idaho State University  
University of Idaho

## ILLINOIS

Bradley University  
Eastern Illinois University  
Governors State University  
Illinois Institute of Technology  
Illinois State University  
Lewis University  
Loyola University of Chicago  
North Central College  
Northern Illinois University  
Northwestern University  
Rosalind Franklin University of Medicine and Science  
Rush University  
Southern Illinois University Carbondale  
Southern Illinois University Edwardsville  
The University of Chicago  
University of Illinois at Chicago  
University of Illinois at Springfield  
University of Illinois at Urbana-Champaign  
Western Illinois University

## INDIANA

Ball State University  
Indiana State University  
Indiana University  
Indiana University Indianapolis  
Purdue University  
University of Notre Dame  
University of Southern Indiana  
Valparaiso University

Members as of March 1, 2025

# CGS Members

## IOWA

Iowa State University  
St. Ambrose University  
The University of Iowa  
The University of Northern Iowa

## KANSAS

Emporia State University  
Fort Hays State University  
Kansas State University  
The University of Kansas  
Wichita State University

## KENTUCKY

Eastern Kentucky University  
Northern Kentucky University  
Spalding University  
University of Kentucky  
University of Louisville  
Western Kentucky University

## LOUISIANA

Grambling State University  
Louisiana State University and A & M College  
Louisiana State University Health Sciences Center  
Northwestern State University of Louisiana  
The University of New Orleans  
Tulane University  
University of Louisiana at Lafayette

## MAINE

University of Maine

## MARYLAND

Bowie State University  
Coppin State University  
Hood College  
Loyola University Maryland  
Morgan State University  
Salisbury University  
The Johns Hopkins University  
Towson University

University of Maryland, Baltimore  
University of Maryland, Baltimore County  
University of Maryland, College Park  
University of Maryland, Eastern Shore

## MASSACHUSETTS

Boston College  
Boston University  
Brandeis University  
Bridgewater State University  
Clark University  
Curry College  
Fitchburg State University  
Harvard University  
Massachusetts Institute of Technology  
Northeastern University  
Salem State University  
Tufts University  
University of Massachusetts Amherst  
University of Massachusetts Boston  
University of Massachusetts Lowell  
University of Massachusetts Medical School  
Wentworth Institute of Technology  
Woods Hole Oceanographic Institution  
Worcester Polytechnic Institute

## MICHIGAN

Andrews University  
Central Michigan University  
Eastern Michigan University  
Ferris State University  
Grand Valley State University  
Kettering University  
Michigan State University

Michigan Technological University  
Northern Michigan University  
Oakland University  
University of Michigan  
University of Michigan-Flint  
Van Andel Institute Graduate School  
Wayne State University  
Western Michigan University

## MINNESOTA

Bemidji State University  
Concordia University St. Paul  
Hazelden Betty Ford Graduate School  
Minnesota State University Moorhead  
Minnesota State University, Mankato  
Rasmussen University  
St. Cloud State University  
University of Minnesota  
Walden University

## MISSISSIPPI

Alcorn State University  
Jackson State University  
Mississippi State University  
University of Mississippi  
University of Mississippi Medical Center  
University of Southern Mississippi

## MISSOURI

Kansas City University  
Missouri State University  
Missouri University of Science and Technology  
Missouri Western State University  
Saint Louis University  
Southeast Missouri State University  
Truman State University

University of Central Missouri  
University of Missouri, Columbia  
University of Missouri, Kansas City  
Washington University in St. Louis

## MONTANA

Montana State University  
University of Montana

## NEBRASKA

Creighton University  
University of Nebraska at Kearney  
University of Nebraska at Omaha  
University of Nebraska Medical Center  
University of Nebraska-Lincoln

## NEVADA

University of Nevada, Las Vegas  
University of Nevada, Reno

## NEW HAMPSHIRE

Dartmouth College  
University of New Hampshire

## NEW JERSEY

Caldwell University  
Monmouth University  
Montclair State University  
New Jersey Institute of Technology  
Princeton University  
Rowan University  
Rutgers University, Newark Campus  
Rutgers University, School of Graduate Studies  
Seton Hall University  
Stevens Institute of Technology  
The College of New Jersey

**NEW MEXICO**

New Mexico Highlands University  
 New Mexico Institute of Mining and Technology  
 New Mexico State University  
 University of New Mexico

**NEW YORK**

Albert Einstein College of Medicine  
 City College of CUNY  
 City University of New York Graduate Center  
 Clarkson University  
 Columbia University  
 Cornell University  
 Fordham University  
 Hofstra University  
 Ithaca College  
 John Jay College of Criminal Justice  
 Nazareth University  
 New York Institute of Technology  
 New York Medical College  
 New York University  
 Rensselaer Polytechnic Institute  
 Rochester Institute of Technology  
 Sarah Lawrence College  
 St. Bonaventure University  
 St. John's University  
 State University of New York at Binghamton  
 State University of New York at Oneonta  
 State University of New York at Oswego  
 State University of New York Upstate Medical University  
 Stony Brook University  
 SUNY College of Environmental Science and Forestry  
 SUNY Empire State College  
 Syracuse University  
 The New School for Social Research

The Rockefeller University  
 The University at Albany, State University of New York  
 The University at Buffalo, SUNY  
 The University of Rochester

**NORTH CAROLINA**

Appalachian State University  
 Duke University  
 East Carolina University  
 Fayetteville State University  
 North Carolina Agricultural & Technical State University  
 North Carolina Central University  
 North Carolina State University  
 University of North Carolina at Chapel Hill  
 University of North Carolina at Charlotte  
 University of North Carolina at Greensboro  
 University of North Carolina at Pembroke  
 University of North Carolina at Wilmington  
 Wake Forest University  
 Western Carolina University  
 Winston-Salem State University

**NORTH DAKOTA**

North Dakota State University  
 University of North Dakota

**OHIO**

Bowling Green State University  
 Case Western Reserve University  
 Cleveland State University  
 John Carroll University  
 Kent State University

Miami University  
 Northeast Ohio Medical University  
 Ohio University  
 Otterbein University  
 Shawnee State University  
 The Ohio State University  
 The University of Akron  
 The University of Toledo  
 University of Cincinnati  
 University of Dayton  
 Walsh University  
 Wright State University  
 Youngstown State University

**OKLAHOMA**

Langston University  
 Oklahoma State University  
 The University of Central Oklahoma  
 The University of Tulsa  
 University of Oklahoma  
 University of Oklahoma Health Sciences Center

**OREGON**

Oregon Health and Science University  
 Oregon State University  
 Portland State University  
 University of Oregon  
 Western Oregon University

**PENNSYLVANIA**

Bryn Mawr College  
 Bucknell University  
 Carnegie-Mellon University  
 Commonwealth University of Pennsylvania  
 Drexel University  
 Duquesne University  
 Indiana University of Pennsylvania  
 International Institute for Restorative Practices  
 Kutztown University of Pennsylvania  
 Lehigh University

Millersville University of Pennsylvania  
 Temple University  
 The Pennsylvania State University  
 Thomas Jefferson University  
 University of Pennsylvania  
 University of Pittsburgh  
 Villanova University  
 West Chester University

**RHODE ISLAND**

Brown University  
 University of Rhode Island

**SOUTH CAROLINA**

Clemson University  
 College of Charleston  
 Furman University  
 Medical University of South Carolina  
 University of South Carolina  
 University of South Carolina  
 University of South Carolina Upstate

**SOUTH DAKOTA**

South Dakota State University  
 University of South Dakota

**TENNESSEE**

Belmont University  
 East Tennessee State University  
 Meharry Medical College  
 Middle Tennessee State University  
 Tennessee State University  
 Tennessee Technological University  
 The University of Tennessee at Chattanooga  
 The University of Tennessee Health Science Center

# CGS Members

The University of Tennessee, Knoxville  
University of Memphis  
Vanderbilt University

## TEXAS

Baylor College of Medicine  
Baylor University  
Lamar University  
Midwestern State University  
Rice University  
Sam Houston State University  
Southern Methodist University  
Tarleton State University  
Texas A&M International University  
Texas A&M University  
Texas A&M University-Commerce  
Texas A&M University-Corpus Christi  
Texas A&M University at Galveston  
Texas A&M University-Central Texas  
Texas Christian University  
Texas Southern University  
Texas State University  
Texas Tech University  
Texas Woman's University  
The University of Texas at Arlington  
The University of Texas at Austin  
The University of Texas at Dallas  
The University of Texas at El Paso  
The University of Texas at San Antonio  
The University of Texas at Tyler  
The University of Texas MD Anderson Cancer Center UTHealth Graduate School of Biomedical Sciences  
The University of Texas Rio Grande Valley

University of Houston  
University of North Texas  
University of North Texas at Dallas  
University of North Texas Health Science Center at Fort Worth  
University of Texas Grad School of Biomedical Sci at Galveston  
University of Texas Health Science Center at San Antonio  
University of Texas Southwestern Medical Center  
West Texas A&M University

## UTAH

Brigham Young University  
University of Utah  
Utah State University

## VERMONT

University of Vermont

## VIRGINIA

College of William and Mary  
George Mason University  
Hampton University  
James Madison University  
Norfolk State University  
Old Dominion University  
Radford University  
University of Virginia  
Virginia Commonwealth University  
Virginia Polytechnic Institute and State University

## WASHINGTON

Central Washington University  
Eastern Washington University  
University of Washington  
Washington State University  
Western Washington University

## WASHINGTON, DC

American University  
Gallaudet University  
Georgetown University  
Howard University  
The Catholic University of America  
The George Washington University  
University of the District of Columbia

## WEST VIRGINIA

American Public University  
Fairmont State University  
West Virginia University

## WISCONSIN

Marquette University  
Medical College of Wisconsin  
University of Wisconsin-Green Bay  
University of Wisconsin-Madison  
University of Wisconsin-Milwaukee  
University of Wisconsin-Whitewater

## WYOMING

University of Wyoming

## PUERTO RICO

Inter American University of Puerto Rico  
Polytechnic University of Puerto Rico

## CANADA

Concordia University  
McGill University  
McMaster University  
Memorial University  
Queen's University  
Universite du Quebec  
University of Alberta  
University of Calgary  
University of Manitoba  
University of Regina  
University of Toronto  
Western University

Members as of March 1, 2025





# Exhibitor Registration Form

**65TH ANNUAL MEETING**  
DECEMBER 3-6, 2025 | WASHINGTON, DC



## STEP 1: PROVIDE YOUR CONTACT INFORMATION

PRIMARY CONTACT

COMPANY NAME

ADDRESS

CITY

STATE

ZIP

EMAIL ADDRESS

You will receive an acknowledgment from CGS after your form has been processed. In August 2025, you will receive a request to submit an additional form with the names of your two on-site representatives.

This application reserves exhibit space for your company at the Council of Graduate Schools' 65th Annual Meeting. Exhibit space is guaranteed once payment has been received. All payments are subject to the CGS refund policy.

## STEP 2: SELECT REGISTRATION

- \$3,000 Member Early-bird Rate (before May 16)
- \$5,000 Nonmember Early-bird Rate (before May 16)
- \$3,500 Member Rate (must be received by October 31)
- \$6,000 Nonmember Rate (must be received by October 31)

## STEP 3: INDICATE YOUR EXHIBIT SPACE PREFERENCES

Please list any categories of exhibitors you do not wish to be near:

\_\_\_\_\_

\_\_\_\_\_

\_\_\_\_\_

## STEP 4: SELECT YOUR PAYMENT METHOD

- Check, payable to Council of Graduate Schools
- MasterCard     Visa     Discover     AmEx

NAME ON CARD

CARD NUMBER

CVV NUMBER

EXP. DATE

SIGNATURE

## STEP 5: SUBMIT YOUR REGISTRATION

- Email: Send scanned form and credit card payment information to: [cbright@cgs.nche.edu](mailto:cbright@cgs.nche.edu)
- Fax: Fax completed form and credit card payment information to: 202-296-9194
- Mail: Mail completed registration form and payment to:  
Colton Bright  
One Dupont Circle, NW  
Suite 230  
Washington, DC 20036

## Questions?

Please contact  
Colton Bright,  
at 571-250-7285 or  
[cbright@cgs.nche.edu](mailto:cbright@cgs.nche.edu).

### Right of Refusal

CGS reserves the right to refuse to rent exhibit space, to release a sponsorship, or to deny membership in the Sustaining Membership Network to any applicant.

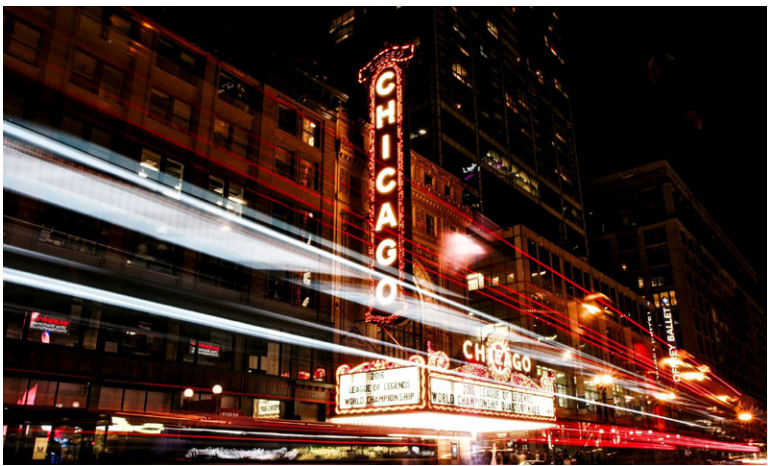
### Disavowal of Endorsement

CGS's acceptance of a contract with a potential exhibitor, sponsor, or Sustaining Membership Network member is not, and should not be construed as an endorsement by CGS of the organization or of its products or services.

Save the Date  
2026 Summer  
Workshop



*Chicago*  
JULY 11-15, 2026



# Save the Date 2026 Annual Meeting

December 2-5, 2026  
Los Angeles, CA

