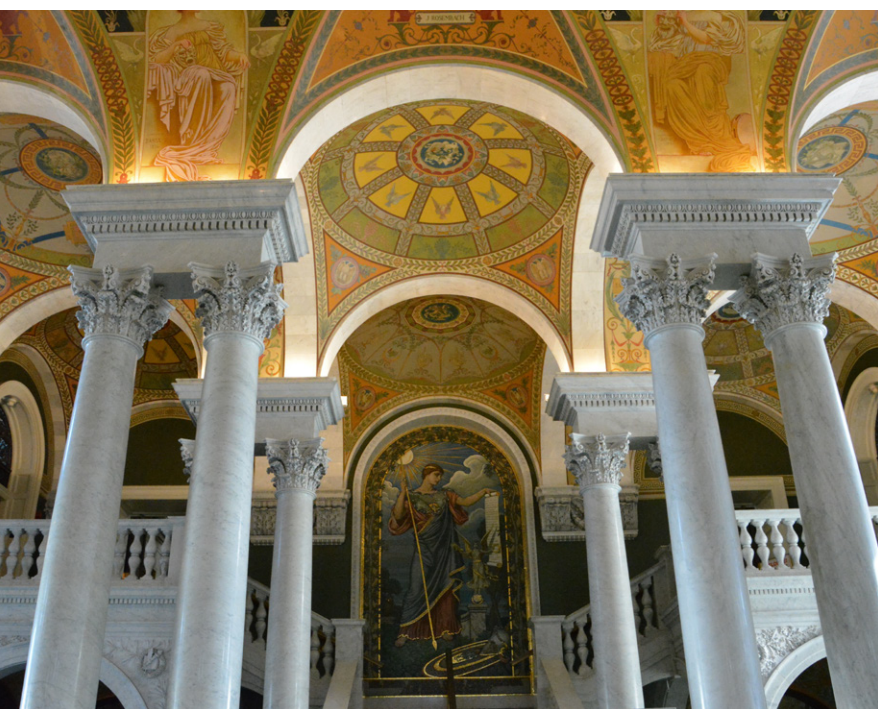




CGS PARTNERSHIP PROSPECTUS

2025 Annual Meeting

December 3-6 | Washington, DC





About CGS

Since 1961, the Council of Graduate Schools (CGS) has been the only U.S. organization dedicated solely to the advancement of graduate education and research. When you reach CGS members, you reach graduate deans, major university decision-makers. CGS graduate deans represent approximately 450 universities in the U.S., Canada, and a diverse range of international institutions.

Contents

- 1 About CGS
- 2 Top Priorities for Graduate School leaders
- 3 Benefits of Exhibiting and Sponsoring
- 4 Propose a Session
- 6 Sponsorship Opportunities
- 8 Engagement Beyond the Meeting
- 11 CGS Members
- 15 Exhibitor Registration Form

ABOUT



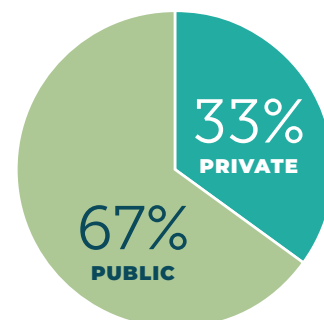
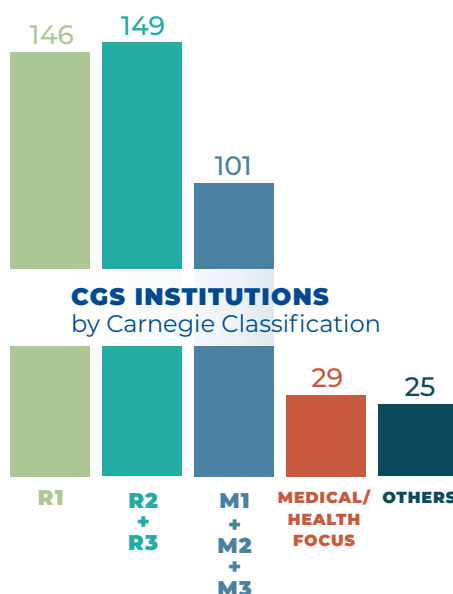
OUR MEMBERS

450

U.S. AND
CANADIAN MEMBER
UNIVERSITIES

25

INTERNATIONAL
MEMBERS



The Carnegie classification system categorizes PhD-granting institutions by level of research activity (R1 = highest) and master's colleges and universities by the number of degrees awarded (M1 = larger).

as of January 1, 2025

DEGREES

CGS MEMBERS IN THE U.S. AWARD

80.8%

of all **DOCTORAL DEGREES**

for an annual total of

64,922

research/scholarship
doctoral degrees

58.4%

of all **MASTER'S DEGREES**

for an annual total of

522,387

master's degrees



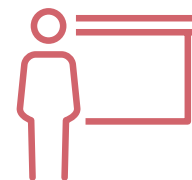
STUDENTS

1,766,443

AGGREGATE ENROLLMENT
(master's and doctoral students)

365,284

ASSISTANTSHIPS SUPPORTED



RESEARCH

\$62,768,530,107

R&D EXPENDITURES

\$52,136,011,488

FEDERAL RESEARCH DOLLARS AWARDED

For more information and data sources
visit cgsnet.org/about.

Who Attends the CGS Annual Meeting?

Forty percent of attendees are graduate deans, senior university decision-makers with authority in admissions, benchmarking, curriculum, learning assessment, and online education. Another 30 percent are assistant or associate deans. The remaining 30 percent of attendees serve in some other university role such as provost, director of admissions, director of diversity, or director of graduate studies in a department or are employed by a non-university organization.

THE 2024 CGS ANNUAL MEETING ATTRACTED ATTENDEES FROM

47 States

AND THE DISTRICT
OF COLUMBIA

230

UNIVERSITIES

8

COUNTRIES

32

OTHER ORGANIZATIONS,
COMPANIES AND
FEDERAL AGENCIES

Top Priorities for Graduate School Leaders

- Admissions, recruitment, and enrollment
- Assessing student and/or workforce demand for graduate programs
- Badges, stackable credentials, and other non-degree graduate education
- Data analytics and machine learning in graduate education administration
- Diversity, equity, and inclusion
- Faculty and advising
- Graduate student mental health and graduate program climate
- Online graduate education
- Organizational structure and infrastructure, including graduate school technology
- Student financial support
- Student professional development and career outcomes

"CGS Annual Meeting is unmatched in its ability to connect graduate deans with peers, engage in meaningful dialogue about the future of graduate education, and explore innovative solutions to shared challenges. With its diverse sessions, collaborative atmosphere, and focus on emerging trends, the meeting empowers leaders to drive impactful change."

—EMORY WOODARD

Dean of Graduate Studies, College of Liberal Arts and
Sciences, Villanova University



Benefits of & SPONSORING & EXHIBITING

KEY DEADLINES

May 16, 2025	Early-bird exhibitor registration due
May 16, 2025	Session proposals due
July 31, 2025	Reserve sponsorships by this date
October 31, 2025	Exhibitor registration form due

Exhibitors Receive

- Registration for up to two representatives of your company. Includes full access to meeting sessions, all meal functions open to regular attendees, receptions, and refreshment breaks.
- Option to add one complimentary exhibit-hall only registration pass to your 2025 CGS Annual Meeting exhibitor registration, in addition to the two full registrations that are included with exhibiting (available only to sustaining members)
- Option to select exhibit table location (available only to sustaining members)
- Company description and link to your website on the CGS website
- Mailing labels (pdf format) of all Annual Meeting participants as of November 7. Sustaining members receive the list in Excel as well.
- Acknowledgment in Annual Meeting mobile app
- Six-foot skirted display table
- Internet access

Meeting Sponsors Receive

- One complimentary ad in *GradEdge* newsletter
- Acknowledgment of your company in electronic mailing promoting the Annual Meeting
- Special thanks from the CGS President in their opening remarks to the meeting
- Projection of company logo via PowerPoint slide in general session room
- Acknowledgment in Annual Meeting mobile app and on the CGS website
- Additional benefits listed in individual sponsorship description

See Exhibitor Registration form on page 15.



Social media promotion is part of the package

All special event sponsorships (e.g., breakfasts, receptions) come with the guarantee of at least one dedicated “thank you” post from CGS linked to the conference hashtag, #CGSAM2025.



CGS Terms & Conditions

Right of Refusal

CGS reserves the right to refuse to rent exhibit space, to release a sponsorship, or to deny membership in the Sustaining Membership Network to any applicant.

Disavowal of Endorsement

CGS's acceptance of a contract with a potential exhibitor, sponsor, or Sustaining Membership Network member is not, and should not be construed as an endorsement by CGS of the organization or of its products or services.

Guarantee Policy

Sponsorships and exhibit space are guaranteed once payment has been received. All payments are subject to the CGS refund policy as specified in the sponsorship agreement.

Propose a Session

Call for Proposals

Members of the non-profit and business communities help the Council of Graduate Schools fulfill its mission of advancing graduate education. To help our members benefit from the expertise of industry leaders, CGS invites proposals from companies and non-profits to propose Annual Meeting sessions of interest to the CGS membership. Companies and

non-profits gain valuable opportunities to engage with leadership and staff from CGS's 450 member universities. CGS members are national and international thought leaders in their fields, and at the Annual Meeting they share up-to-date information about needs and trends in graduate education.

Lightning Sessions

FRIDAY, DECEMBER 5, 2025, 1:15-1:45 p.m.

4 SPOTS AVAILABLE

MEMBERS: \$4,500; NONMEMBERS: \$6,000

These **30-MINUTE SESSIONS** are an opportunity to share, demonstrate and discuss a recent innovation in graduate education with graduate deans and staff. While we welcome proposals on any topic, CGS gives particular priority to proposals focused on areas of special interest to graduate education administrators:

- Graduate enrollment management
- Supporting student retention and success
- Diversity and inclusion
- Online education
- Professional development for graduate students
- Business analytics for graduate schools and programs
- International student recruitment

Benefits

- Visibility among attendees at the largest national meeting of graduate deans and staff
- 30-minute session led by representatives of your company
- Opportunity to share recent innovations in your field
- Opportunity to present meaningful content to CGS community
- Recognition as the session sponsor in the CGS Annual Meeting mobile app
- Recognition as an Annual Meeting sponsor in Annual Meeting mobile app and on the CGS website

Session Guidelines

- Panel may endorse a particular product or service
- Panel should not serve as a focus group
- Please submit proposals via the [online form](#) or a single pdf attachment to cbright@cgs.nche.edu
- If proposal is selected, proposer agrees to pay all costs within 30 days of selection notice

Proposal Guidelines

- Proposal should not exceed two pages, single spaced
- Proposal should include contact information for primary contact as well as the names and affiliations of potential speakers
- Proposals will be evaluated according to the following criteria:
 - Potential interest to graduate deans and staff
 - Integration of relevant data and/or case studies
 - Established record of success with the innovation(s) you plan to share
 - Knowledge and expertise of presenters

PROPOSALS DUE: MAY 16, 2025



Concurrent Sessions

THURSDAY, DECEMBER 4 AND FRIDAY, DECEMBER 5, 2025
4 SPOTS AVAILABLE
MEMBERS: \$7,000; NONMEMBERS: \$9,500

These **ONE-HOUR SESSIONS** are integrated into CGS's regular programming of concurrent sessions. Your company is invited to collaborate with clients or colleagues to demonstrate its thought leadership on pressing issues in graduate education.

Benefits

- Visibility among attendees at the largest national meeting of graduate deans and staff
- One-hour concurrent session led by representatives of your company
- Opportunity to demonstrate thought leadership
- Opportunity to present meaningful content to CGS community
- Recognition as the session sponsor in the CGS Annual Meeting mobile app
- Recognition as an Annual Meeting sponsor in Annual Meeting mobile app and on the CGS website

Session Guidelines

- Panel content should not exceed 45 minutes, to allow ample time for questions (2-3 speakers is optimal)
- Panel should not be focused on a particular product or service
- Panel should not serve as a focus group
- Please submit proposals via the [online form](#) or a single pdf attachment to cbright@cgs.nche.edu
- If proposal is selected, proposer agrees to pay all costs within 30 days of selection notice

Proposal Guidelines

- Proposal should not exceed two pages, single spaced.
- Proposal should include contact information for primary contact as well as the names and affiliations of potential speakers. At least one graduate dean at a member university should present at the session.
- Proposals will be evaluated according to the following criteria:
 - Addresses pressing issue in graduate education
 - Knowledge and expertise of presenters
 - Commitment of at least one graduate dean at a CGS member university to participate
 - Integration of relevant data or examples
 - Novelty (avoids overlap with other sessions likely to be held at this year's Annual Meeting)



Sponsorship Opportunities



Lanyards

Your company's name and logo will be prominently featured on the lanyards that meeting attendees will use to wear their nametags throughout the meeting. An added benefit of this sponsorship is that lanyards are often visible in meeting photos.

MEMBERS: \$6,500; NONMEMBERS: \$8,000

Hotel Room Key Cards

Reach nearly all the meeting registrants with your company's name and logo printed on the back and front of hotel room key cards. Presented at check-in to each attendee, key cards ensure that your company's name will be encountered early and repeatedly throughout the meeting.

MEMBERS: \$9,500; NONMEMBERS: \$11,000

Conference Wi-Fi

Provide CGS Annual Meeting attendees with complimentary Wi-Fi that is available throughout the exhibit hall and meeting spaces. Sponsorship includes the opportunity to select a custom password, logo recognition on the meeting mobile app, signage throughout the meeting, and acknowledgement in the CGS President's opening remarks.

MEMBERS: \$6,500; NONMEMBERS: \$8,000

Conference Mobile App

Prominently feature your company's brand and expertise by sponsoring the Annual Meeting mobile app. The ad can link to an external webpage featuring a white paper, case study or other online marketing materials you would like to feature. In addition, your sponsorship will be recognized with a sign at the registration desk, and verbal recognition of the sponsorship during the meeting.

MEMBERS: \$6,500; NONMEMBERS: \$8,000



Assistant & Associate Deans' Breakfast

Thursday, December 4

Create brand recognition for your company and connect with emerging leaders in graduate education at this annual breakfast for assistant and associate deans. Receive recognition from the CGS leadership at the opening to this breakfast and provide materials at every table.

MEMBERS: \$5,750; NONMEMBERS: \$7,000

MEMBERS RECEIVE EXCLUSIVE BENEFITS

Companies and organizations are invited to apply to join the CGS Sustaining Membership Network. Membership provides access to discounted pricing, insider information, and more. To learn about becoming a member, please contact Colton Bright at cbright@cgs.nche.edu.

AT THE CGS 65TH ANNUAL MEETING

Plenary Session Sponsorships

Thursday, December 4 (afternoon plenary)

Friday, December 5 (morning plenary)

Friday, December 5 (afternoon plenary)

The CGS Annual Meeting plenary sessions, which feature notable speakers on pressing issues in graduate education, attract the largest audiences at the Annual Meeting. Benefits of this highly visible sponsorship include the option to provide a brief video about your company or for a company representative to deliver brief non-commercial remarks to all meeting attendees before the plenary session is introduced. A CGS leader will recognize and thank the sponsor and introduce the video or company representative. In addition, sponsors receive logo recognition on session signage and may place brochures or publications on designated materials tables in the plenary session room or include an electronic resource in the session description in the meeting mobile app.

MEMBERS: \$5,000; NONMEMBERS: \$6,500

Breakfast Presentations for All Attendees

Thursday, December 4

Friday, December 5

Saturday, December 6

In sponsoring a breakfast open to all meeting attendees, a spokesperson from your organization will give a 30-minute presentation, followed by a question-and-answer session with CGS deans. This is an opportunity to offer expertise on a trend in graduate education, present a new product or service, and gain valuable insights and feedback from decision-makers in the graduate school. During the breakfast, the @CGSGradEd Twitter account will tweet a “thank you” to your company that will be linked to the meeting hashtag (#CGSAM2025).

PLEASE INQUIRE ABOUT PRICING.

Evening Reception for All Attendees

Thursday, December 5

After a busy day of panel sessions, the Thursday evening reception offers Annual Meeting attendees an opportunity to relax, network, and discuss ideas shared in meeting sessions. By sponsoring this well-attended event, your company will be acknowledged by the CGS President during the opening plenary session. Exclusive or lead reception sponsors will be invited to deliver brief welcoming remarks. During the reception, @CGSGradEd will acknowledge your company in a thank-you tweet linked to the meeting hashtag (#CGSAM2025).

PLEASE INQUIRE ABOUT PRICING FOR EXCLUSIVE OR LEAD SPONSORSHIP OPTIONS.

RECEPTION CO-SPONSORSHIP (UP TO 4 CO-SPONSORS):

MEMBERS: \$6,000; NONMEMBERS: \$7,500

Propose a Sponsorship

Don't see your ideal sponsorship opportunity listed here? Propose a unique sponsorship that brings value to your company as well as to CGS member institutions. Please note that proposals are subject to approval by CGS and pricing is determined on a case-by-case basis.



Triple your impact with #CGAM2025

Did you know? CGS's LinkedIn account has nearly 3,000 followers, over 60% of whom are in leadership positions. Engagement with CGS social media triples during the Annual Meeting.



Engagement **BEYOND** the Meeting

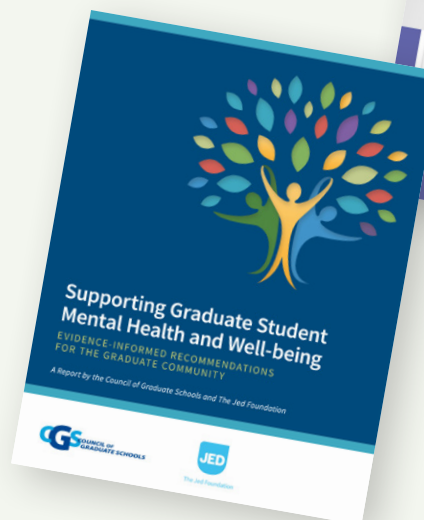
Become a Member

CGS invites organizations with an interest in promoting graduate education to apply for membership in the CGS Sustaining Membership Network. Membership gives companies and organizations:

- Exclusive opportunities for visibility with CGS institutions at the Annual Meeting and throughout the year.
- Timely access to graduate education data and insider knowledge.
- Discounts on CGS meeting registrations, exhibitor fees, webinars, workshops, print publications, and more.
- Additional benefits accrue with increased levels of investment.

Annual dues range from \$1,000 – \$25,000.

To learn more about applying for membership, please contact Colton Bright at cbright@cgs.nche.edu.





Sponsor A Webinar

Interact with the graduate education community in real time: submit a proposal to lead a webinar on a pressing graduate education issue, or cosponsor a planned CGS webinar. Recent CGS webinars have drawn 100-300+ participants, plus as many as 200 views on YouTube after the live webinar.

Members \$2,000 – \$6,000

Nonmembers \$2,500 – \$7,000

To learn more about the CGS sponsored webinar program, please contact Colton Bright at cbright@cgs.nche.edu.



Advertise in *GradEdge*

The quarterly *GradEdge* newsletter brings the latest in graduate education news to its members. With a distribution list of over 2,300 individuals, *GradEdge* reaches the top decision-makers in graduate education. Use the newsletter to place advertisements for products, services, events, and ideas relevant to the graduate education community. Your ad will appear on the landing page and at the end of every article.

50%

Average **OPEN RATE**

Industry average
is 24%

24%

Average **CLICK RATE**

Industry average
is 3-5%

Members \$600

Nonmembers \$1,200

For more information about advertising in *GradEdge*, please contact Colton Bright at cbright@cgs.nche.edu.

Completing the Circle: Supporting the Success of Native Graduate Students

TS/CGS Award for
Innovation.

Program
of Montana
and Programs.

Which Science PhD Students Participating in Professional Research in Brief

Underrepresented Minority (URM) and women science in greater numbers in academic professional development new research brief from CGS.

Using data from CGS's PhD Career Pathways project, science doctoral students participate in professional development that participation differs by race and gender.

The brief also shows that science doctoral students' professional development that is sponsored by their PhD programs at their institution.

Given that minority graduate students and women remain underrepresented in science graduate education and in the STEM workforce, participation can help us understand the potential impact of development investments as well as opportunities for

What Does the Future Hold for International Graduate Education?

By Suzanne T. Ortega

A new year brings new opportunities, and it's a great time to look ahead to the trends and issues in graduate education. I've spent this month reflecting on the internationalization of graduate education and how we can better serve international scholars and create more global networks.

We first need to address some of the issues facing graduate students, international and domestic, and look at how we can prepare ourselves and students for a new global education landscape.

In recent years, we have seen some major shifts in graduate education, especially regarding international enrollment rates. There are key issues we need to address and prepare ourselves for the continued changes in graduate education. [Read more](#) to learn what Suzanne Ortega says about the internationalization of graduate education.



CGS Members

ALABAMA

Alabama A&M University
Alabama State University
Auburn University
Jacksonville State University
The University of Alabama
The University of Alabama at Birmingham
The University of Alabama in Huntsville
University of Montevallo
University of South Alabama

ALASKA

University of Alaska Anchorage
University of Alaska Fairbanks

ARIZONA

Arizona State University
Northern Arizona University
University of Arizona

ARKANSAS

Arkansas State University
Arkansas Tech University
University of Arkansas
University of Arkansas at Little Rock
University of Central Arkansas

CALIFORNIA

Azusa Pacific University
California Institute of Integral Studies
California Institute of Technology
California Polytechnic State University
California State University, Bakersfield
California State University, Fresno
California State University, Los Angeles
California State University, Monterey Bay
California State University, Sacramento

California State University, San Bernardino
California State University, Stanislaus
Chapman University
Fielding Graduate University
Loma Linda University
National University
San Diego State University
San Jose State University
Stanford University
The Claremont Graduate University
University of California, Berkeley
University of California, Davis
University of California, Irvine
University of California, Los Angeles
University of California, Merced
University of California, Riverside
University of California, San Diego
University of California, San Francisco
University of California, Santa Barbara
University of California, Santa Cruz
University of Southern California
University of the Pacific

COLORADO

Adams State University
Colorado School of Mines
Colorado State University
Colorado State University Pueblo
Metropolitan State University
University of Denver
University of Colorado
University of Colorado Denver Anschutz Medical Campus
University of Colorado Boulder
University of Colorado Denver

University of Colorado, Colorado Springs
University of Denver
University of Northern Colorado

CONNECTICUT

Sacred Heart University
Southern Connecticut State University
University of Bridgeport
University of Connecticut
Wesleyan University
Yale University

DELAWARE

University of Delaware

FLORIDA

Florida A&M University
Florida Atlantic University
Florida Gulf Coast University
Florida International University
Florida State University
University of Central Florida
University of Florida
University of Miami
University of North Florida
University of South Florida
University of West Florida

GEORGIA

Augusta University
Clark Atlanta University
Emory University
Georgia Institute of Technology
Georgia Southern University
Georgia State University
Kennesaw State University
Morehouse School of Medicine
University of Georgia
University of North Georgia
Valdosta State University

HAWAII

University of Hawaii at Manoa

IDAHO

Idaho State University
University of Idaho

ILLINOIS

Bradley University
Eastern Illinois University
Governors State University
Illinois Institute of Technology
Illinois State University
Lewis University
Loyola University of Chicago
North Central College
Northern Illinois University
Northwestern University
Rosalind Franklin University of Medicine and Science
Rush University
Southern Illinois University Carbondale
Southern Illinois University Edwardsville
The University of Chicago
University of Illinois at Chicago
University of Illinois at Springfield
University of Illinois at Urbana-Champaign
Western Illinois University

INDIANA

Ball State University
Indiana State University
Indiana University
Indiana University Indianapolis
Purdue University
University of Notre Dame
University of Southern Indiana
Valparaiso University

Members as of March 1, 2025

CGS Members

IOWA

Iowa State University
St. Ambrose University
The University of Iowa
The University of
Northern Iowa

KANSAS

Emporia State University
Fort Hays State University
Kansas State University
The University of Kansas
Wichita State University

KENTUCKY

Eastern Kentucky
University
Northern Kentucky
University
Spalding University
University of Kentucky
University of Louisville
Western Kentucky
University

LOUISIANA

Grambling State University
Louisiana State University
and A & M College
Louisiana State University
Health Sciences Center
Northwestern State
University of Louisiana
The University of
New Orleans
Tulane University
University of Louisiana
at Lafayette

MAINE

University of Maine

MARYLAND

Bowie State University
Coppin State University
Hood College
Loyola University
Maryland
Morgan State University
Salisbury University
The Johns Hopkins
University
Towson University

University of Maryland,
Baltimore
University of Maryland,
Baltimore County
University of Maryland,
College Park
University of Maryland,
Eastern Shore

MASSACHUSETTS

Boston College
Boston University
Brandeis University
Bridgewater State
University
Clark University
Curry College
Fitchburg State University
Harvard University
Massachusetts Institute
of Technology
Northeastern University
Salem State University
Tufts University
University of
Massachusetts Amherst
University of
Massachusetts Boston
University of
Massachusetts Lowell
University of
Massachusetts Medical
School
Wentworth Institute of
Technology
Woods Hole
Oceanographic
Institution
Worcester Polytechnic
Institute

MICHIGAN

Andrews University
Central Michigan
University
Eastern Michigan
University
Ferris State University
Grand Valley State
University
Kettering University
Michigan State University

Michigan Technological
University
Northern Michigan
University
Oakland University
University of Michigan
University of Michigan-
Flint

Van Andel Institute
Graduate School
Wayne State University
Western Michigan
University

MINNESOTA

Bemidji State University
Concordia University
St. Paul
Hazelden Betty Ford
Graduate School
Minnesota State
University Moorhead
Minnesota State
University, Mankato
Rasmussen University
St. Cloud State University
University of Minnesota
Walden University

MISSISSIPPI

Alcorn State University
Jackson State University
Mississippi State
University
University of Mississippi
University of Mississippi
Medical Center
University of Southern
Mississippi

MISSOURI

Kansas City University
Missouri State University
Missouri University of
Science and Technology
Missouri Western State
University
Saint Louis University
Southeast Missouri State
University
Truman State University

University of Central
Missouri
University of Missouri,
Columbia
University of Missouri,
Kansas City
Washington University
in St. Louis

MONTANA

Montana State University
University of Montana

NEBRASKA

Creighton University
University of Nebraska
at Kearney
University of Nebraska
at Omaha
University of Nebraska
Medical Center
University of Nebraska-
Lincoln

NEVADA

University of Nevada,
Las Vegas
University of Nevada,
Reno

NEW HAMPSHIRE

Dartmouth College
University of
New Hampshire

NEW JERSEY

Caldwell University
Monmouth University
Montclair State University
New Jersey Institute
of Technology
Princeton University
Rowan University
Rutgers University,
Newark Campus
Rutgers University, School
of Graduate Studies
Seton Hall University
Stevens Institute
of Technology
The College of New Jersey

NEW MEXICO

New Mexico Highlands University
 New Mexico Institute of Mining and Technology
 New Mexico State University
 University of New Mexico

NEW YORK

Albert Einstein College of Medicine
 City College of CUNY
 City University of New York Graduate Center
 Clarkson University
 Columbia University
 Cornell University
 Fordham University
 Hofstra University
 Ithaca College
 John Jay College of Criminal Justice
 Nazareth University
 New York Institute of Technology
 New York Medical College
 New York University
 Rensselaer Polytechnic Institute
 Rochester Institute of Technology
 Sarah Lawrence College
 St. Bonaventure University
 St. John's University
 State University of New York at Binghamton
 State University of New York at Oneonta
 State University of New York at Oswego
 State University of New York Upstate Medical University
 Stony Brook University
 SUNY College of Environmental Science and Forestry
 SUNY Empire State College
 Syracuse University
 The New School for Social Research

The Rockefeller University
 The University at Albany, State University of New York
 The University at Buffalo, SUNY
 The University of Rochester

NORTH CAROLINA

Appalachian State University
 Duke University
 East Carolina University
 Fayetteville State University
 North Carolina Agricultural & Technical State University
 North Carolina Central University
 North Carolina State University
 University of North Carolina at Chapel Hill
 University of North Carolina at Charlotte
 University of North Carolina at Greensboro
 University of North Carolina at Pembroke
 University of North Carolina at Wilmington
 Wake Forest University
 Western Carolina University
 Winston-Salem State University

NORTH DAKOTA

North Dakota State University
 University of North Dakota

OHIO

Bowling Green State University
 Case Western Reserve University
 Cleveland State University
 John Carroll University
 Kent State University

Miami University
 Northeast Ohio Medical University
 Ohio University
 Otterbein University
 Shawnee State University
 The Ohio State University
 The University of Akron
 The University of Toledo
 University of Cincinnati
 University of Dayton
 Walsh University
 Wright State University
 Youngstown State University

OKLAHOMA

Langston University
 Oklahoma State University
 The University of Central Oklahoma
 The University of Tulsa
 University of Oklahoma
 University of Oklahoma Health Sciences Center

OREGON

Oregon Health and Science University
 Oregon State University
 Portland State University
 University of Oregon
 Western Oregon University

PENNSYLVANIA

Bryn Mawr College
 Bucknell University
 Carnegie-Mellon University
 Commonwealth University of Pennsylvania
 Drexel University
 Duquesne University
 Indiana University of Pennsylvania
 International Institute for Restorative Practices
 Kutztown University of Pennsylvania
 Lehigh University

Millersville University of Pennsylvania
 Temple University
 The Pennsylvania State University
 Thomas Jefferson University
 University of Pennsylvania
 University of Pittsburgh
 Villanova University
 West Chester University

RHODE ISLAND

Brown University
 University of Rhode Island

SOUTH CAROLINA

Clemson University
 College of Charleston
 Furman University
 Medical University of South Carolina
 University of South Carolina
 University of South Carolina Upstate

SOUTH DAKOTA

South Dakota State University
 University of South Dakota

TENNESSEE

Belmont University
 East Tennessee State University
 Meharry Medical College
 Middle Tennessee State University
 Tennessee State University
 Tennessee Technological University
 The University of Tennessee at Chattanooga
 The University of Tennessee Health Science Center

CGS Members

The University of
Tennessee, Knoxville
University of Memphis
Vanderbilt University

TEXAS

Baylor College of Medicine
Baylor University
Lamar University
Midwestern State
University
Rice University
Sam Houston State
University
Southern Methodist
University
Tarleton State University
Texas A&M International
University
Texas A&M University
Texas A&M University-
Commerce
Texas A&M University-
Corpus Christi
Texas A&M University at
Galveston
Texas A&M University-
Central Texas
Texas Christian University
Texas Southern University
Texas State University
Texas Tech University
Texas Woman's University
The University of Texas
at Arlington
The University of Texas
at Austin
The University of Texas
at Dallas
The University of Texas
at El Paso
The University of Texas
at San Antonio
The University of Texas
at Tyler
The University of Texas
MD Anderson Cancer
Center UTHealth
Graduate School of
Biomedical Sciences
The University of Texas
Rio Grande Valley

University of Houston
University of North Texas
University of North Texas
at Dallas
University of North Texas
Health Science Center
at Fort Worth
University of Texas Grad
School of Biomedical Sci
at Galveston
University of Texas Health
Science Center at
San Antonio
University of Texas
Southwestern
Medical Center
West Texas A&M
University

UTAH

Brigham Young University
University of Utah
Utah State University

VERMONT

University of Vermont

VIRGINIA

College of William
and Mary
George Mason University
Hampton University
James Madison University
Norfolk State University
Old Dominion University
Radford University
University of Virginia
Virginia Commonwealth
University
Virginia Polytechnic
Institute and State
University

WASHINGTON

Central Washington
University
Eastern Washington
University
University of Washington
Washington State
University
Western Washington
University

WASHINGTON, DC

American University
Gallaudet University
Georgetown University
Howard University
The Catholic University
of America
The George Washington
University
University of the
District of Columbia

WEST VIRGINIA

American Public University
Fairmont State University
West Virginia University

WISCONSIN

Marquette University
Medical College of
Wisconsin
University of Wisconsin-
Green Bay
University of Wisconsin-
Madison
University of Wisconsin-
Milwaukee
University of Wisconsin-
Whitewater

WYOMING

University of Wyoming

PUERTO RICO

Inter American University
of Puerto Rico
Polytechnic University
of Puerto Rico

CANADA

Concordia University
McGill University
McMaster University
Memorial University
Queen's University
Universite du Quebec
University of Alberta
University of Calgary
University of Manitoba
University of Regina
University of Toronto
Western University

Members as of March 1, 2025



Exhibitor Registration Form

65TH ANNUAL MEETING
DECEMBER 3-6, 2025 | WASHINGTON, DC



STEP 1: PROVIDE YOUR CONTACT INFORMATION

PRIMARY CONTACT

COMPANY NAME

ADDRESS

CITY

STATE

ZIP

EMAIL ADDRESS

You will receive an acknowledgment from CGS after your form has been processed.
In August 2025, you will receive a request to submit an additional form with the names of your two on-site representatives.

This application reserves exhibit space for your company at the Council of Graduate Schools' 65th Annual Meeting. Exhibit space is guaranteed once payment has been received. All payments are subject to the CGS refund policy.

STEP 2: SELECT REGISTRATION

- ☐ \$3,000 Member Early-bird Rate
(before May 16)
- ☐ \$5,000 Nonmember Early-bird Rate
(before May 16)
- ☐ \$3,500 Member Rate
(must be received by October 31)
- ☐ \$6,000 Nonmember Rate
(must be received by October 31)

STEP 3: INDICATE YOUR EXHIBIT SPACE PREFERENCES

Please list any categories of exhibitors you do not wish to be near:

STEP 4: SELECT YOUR PAYMENT METHOD

- ☐ Check, payable to Council of Graduate Schools
- ☐ MasterCard ☐ Visa ☐ Discover ☐ AmEx

NAME ON CARD

CARD NUMBER

CVV NUMBER

EXP. DATE

SIGNATURE

Right of Refusal

CGS reserves the right to refuse to rent exhibit space, to release a sponsorship, or to deny membership in the Sustaining Membership Network to any applicant.

Disavowal of Endorsement

CGS's acceptance of a contract with a potential exhibitor, sponsor, or Sustaining Membership Network member is not, and should not be construed as an endorsement by CGS of the organization or of its products or services.

Questions?

*Please contact
Colton Bright,
at 571-250-7285 or
cbright@cgs.nche.edu.*

STEP 5: SUBMIT YOUR REGISTRATION

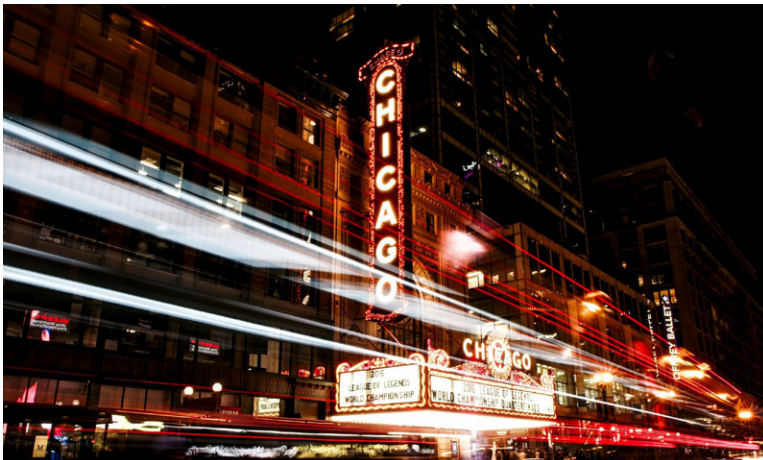
Email: Send scanned form and credit card payment information to:
cbright@cgs.nche.edu

Fax: Fax completed form and credit card payment information to:
202-296-9194

Mail: Mail completed registration form and payment to:
Colton Bright
One Dupont Circle, NW
Suite 230
Washington, DC 20036

Save the Date

2026 Summer Workshop



Save the Date 2026 Annual Meeting

December 2-5, 2026
Los Angeles, CA

