

# ABOUT CGS COUNCIL OF GRADUATE SCHOOLS

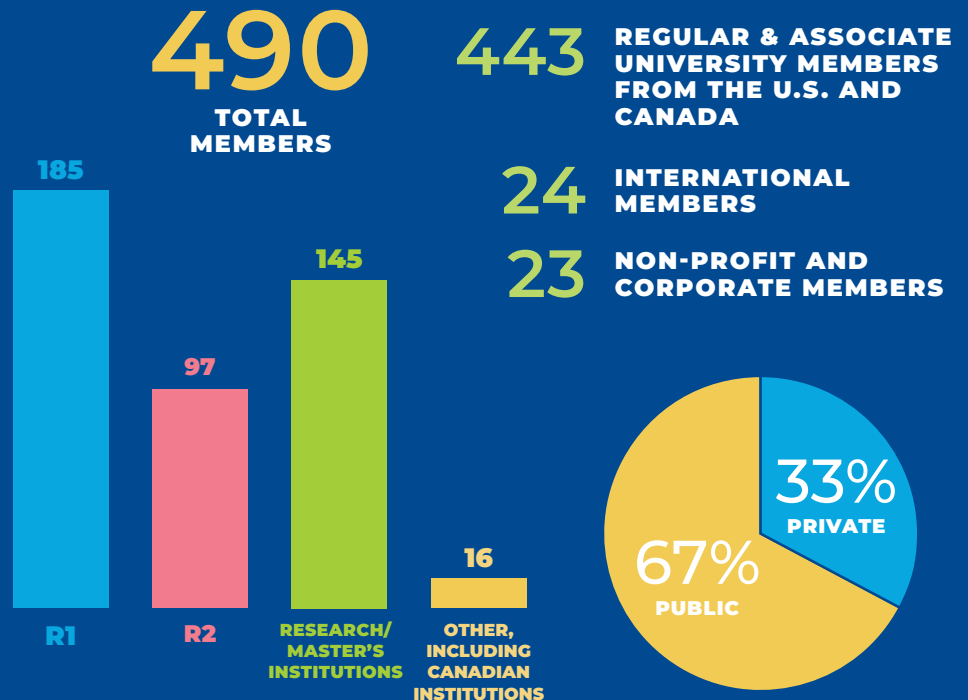
## MISSION

For over 65 years, the Council of Graduate Schools (CGS) has been the only national organization dedicated solely to advancing **MASTER'S AND DOCTORAL EDUCATION AND RESEARCH**.

CGS accomplishes its mission through **ADVOCACY**, the development and dissemination of **BEST PRACTICES**, and innovative **RESEARCH**.

The Council regularly convenes leaders in graduate education to discuss and take action on a broad range of issues affecting master's and doctoral education.

## OUR MEMBERS



The 2025 Carnegie Classifications include Research Activity Designations as separate listings from the Institutional Classification. R1 = Very High Spending and Doctorate Production; R2 = High Spending and Doctorate Production. Research/Master's Institutions are those with a Research Colleges and Universities designation or master's institutions with no research designation. Other includes Canadian institutions and U.S. baccalaureate institutions.

## DEGREES

### CGS MEMBERS IN THE U.S. AWARD

About  
**80%**  
of all **DOCTORAL DEGREES**

for an annual total of  
**65,584**  
research/scholarship  
doctoral degrees

About  
**60%**  
of all **MASTER'S DEGREES**

for an annual total of  
**563,866**  
master's degrees



## STUDENTS

**1,710,118** **AGGREGATE ENROLLMENT**  
(master's and  
doctoral students)

**353,388** **ASSISTANTSHIPS SUPPORTED**



## RESEARCH

**R&D EXPENDITURES** **\$76.9B**

**FEDERAL RESEARCH DOLLARS AWARDED** **\$61.4B**

**Sources:** Council of Graduate Schools, Membership Data and U.S. Department of Education, National Center for Education Statistics, Integrated Postsecondary Education Data System (IPEDS), Completions, Employees by Assigned Position, Finance (Fall 2023)

**For more information and data sources visit [cgsnet.org/about-cgs](https://cgsnet.org/about-cgs). ALL STATISTICS AS OF JUNE 2025.**

## CGS Regular and Associate Membership

opens the door to a network of graduate institutions across the U.S. and Canada

### PEER ENGAGEMENT AND NETWORKING

- Participate in the **CGS Annual Meeting and Summer Workshop & New Deans Institute**, the premier professional development and networking events for leaders in graduate education where pressing issues like the rise of **AI and supporting master's students are addressed**.
- Access to the **Dean's Discussion Board**, a platform for information exchange dedicated solely to graduate education.
- Eligibility to participate in **governance of the Council** and serve on **advisory committees**.\*
- Access to members-only webinars and the **CGS webinar recording library** with presentations on timely issues including **Fundraising for Graduate Education** and **Microcredentials in Graduate Education**.
- Connect at **CGS presidential office hours**, free, members-only virtual events designed to promote opportunities for networking among graduate deans from universities of similar size and mission and to build a national network of trusted peers.



### ACCESS TO DATA & INSIGHTS

- CGS Member Library with publications like **The Organization and Administration of Graduate Education: A Guide for University Leaders and Master's Education: A Guide to Creating and Sustaining Student-Centered Programs**.
- Resources from the **Cost of Graduate Education (CGE) taskforce** to address challenges around the cost and value of graduate degrees, including a **report, action agenda** and associated **member toolkit**.
- **47th Presidential Administration** webpage with the latest information on executive orders and regulatory changes by the administration.
- **Strategic consultations** and custom data benchmarking reports to assist in tactical decision-making about graduate education on your campus (reduced member rates).
- Subscriptions to **GradEdge**, featuring news on national issues and trends in graduate education, and **Washington Insights & Highlights**, providing up-to-date information on public policy and federal regulations that impact graduate education.



### VISIBILITY & SUPPORT FOR GRADUATE EDUCATION

- Eligibility to nominate your university, peers, and graduate students for five **CGS awards programs**.
- Opportunity to apply for subaward grants like **Scaling a Systems Approach to Inclusive Graduate Research Environments**.



### RESOURCES FOR ENROLLMENT & COMPLETION

- Option to participate in the **National Name Exchange (NNE)**, a program designed to help graduate programs recruit domestic students from institutions across the U.S. The Exchange is open to all CGS members at no additional cost.
- **A guide for Supporting Fair and Inclusive Graduate Programs** offering promising practices in recruitment and admissions, inclusive program cultures, and mentoring.
- Access to **Graduate Enrollment and Degrees by Fine Field**, an annual report, available only to CGS members, which includes data on first-time and total graduate enrollment data by fine field of study, gender, citizenship, and race/ethnicity.
- Option to be a signatory to the **Resolution Regarding Graduate Scholars, Fellows, Trainees, and Assistants** (the April 15 Resolution).



### TO LEARN MORE, VISIT US ONLINE:

-  [cgsnet.org](https://cgsnet.org)
-  202-461-3868
-  [memberservices@cgs.nche.edu](mailto:memberservices@cgs.nche.edu)
-  @Council of Graduate Schools
-  Council of Graduate Schools
-  @CGSGradEd



\* Per CGS bylaws, primary representatives from Regular member institutions may serve on the board & committees